

OFFICE OF THE GOVERNOR



STATE CAPITOL
MONTGOMERY, ALABAMA 36130

KAY IVEY
GOVERNOR

(334) 242-7100
FAX: (334) 242-3282

STATE OF ALABAMA

April 16, 2018

The Honorable Ashley C. Curry
Mayor, City of Vestavia Hills
1032 Montgomery Highway
Vestavia Hills, Alabama 35216

RE: TAPAA-TA18(911)
Fiscal Year (FY) 2018 Transportation Alternatives Set-aside Program

Dear Mayor Curry:

This letter is to advise you that your FY 2018 application for the Federal Transportation Alternatives Set-aside Program has been approved. Federal funds in the amount of \$280,000.00 is being awarded for the Sidewalk Connectors Project. Congratulations!

Personnel from the Region Office of the Alabama Department of Transportation will be in contact with you concerning the requirements that will have to be followed in administering this project. If you have any questions concerning this matter, please call the Department's Local Transportation Bureau Chief, Ed Phillips at (334) 242-6203.

Sincerely,

A handwritten signature in black ink that reads "Kay Ivey".

Kay Ivey
Governor

KI/JRC/DEP:la

cc: Senator J.T. Waggoner
Representative Jim Carns
Mr. Mark Bartlett, FHWA Alabama Division Administrator
Mr. John R. Cooper, ALDOT Transportation Director
Mr. DeJarvis Leonard, ALDOT East Central Region Engineer
Mr. Tony Harris, ALDOT Media and Community Relations
File

acc



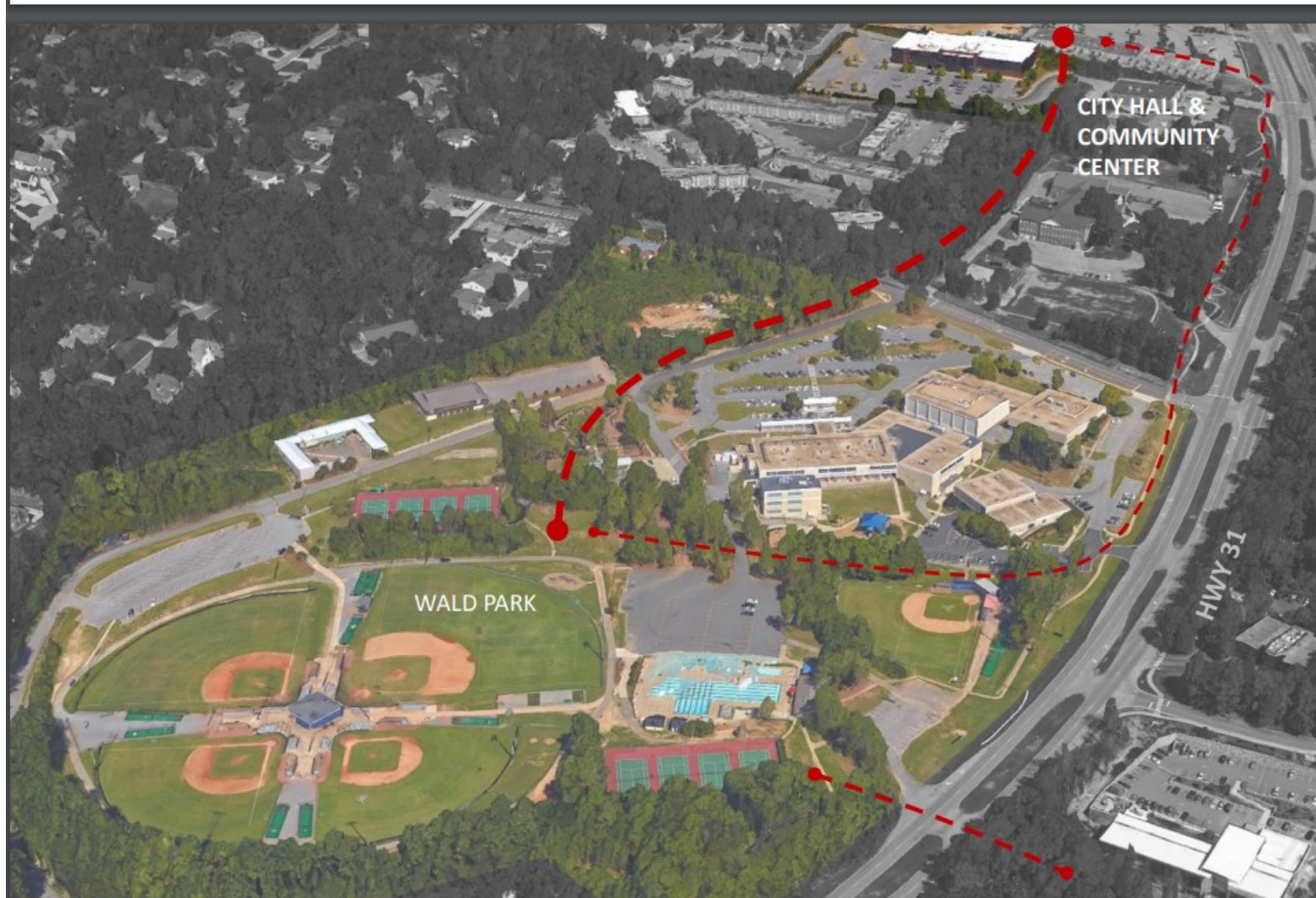
EXECUTIVE SUMMARY

COMMUNITY SPACES CONNECTOR ROUTE

FY2018 TRANSPORTATION ALTERNATIVES PROGRAM PROPOSAL

The Community Spaces Connector is a proposed pedestrian route from the existing Wald Park to the new Vestavia Hills City Hall (2015) and the future Community Building, which will house civic and recreational programming as well as the Chamber of Commerce. Along the route are Vestavia Hills Elementary West, Southminster Presbyterian Church and Day School, and Tree Top Apartments.

- \$345,000 total project budget, which would require an estimated \$95,000 from the City.
- Federal TAP funding proposed is 80% of costs not including preliminary engineering, \$250,000.
- Approximately 1600 lf of 6ft wide sidewalk from Merryvale Rd/Old Montgomery Hwy to Community Building (currently Gold's Gym) with switchbacks approaching, then wrapping around parking lot to sidewalk at Mayland Lane.
- Bridge/decked overlook feature at the creek behind Southminster Presbyterian.
- Safety barrier along route to separate pedestrians from Community Building vehicular traffic.
- ADA accessible route from parking at Community Building to City Hall, where large events are frequently held.



A desire for a path to connect Wald Park to the new City Hall (2015) and a future “community center” was proposed during the Community Spaces presentations in November 2016. In 2017 the Council decided to make an offer to purchase the existing Gold’s Gym property, and the City now owns the site which will become the “Community Building.” The path shown above was for discussion purposes only, with no supporting conceptual design or site work. In the series of Community Spaces Plan public meetings held summer of 2017, the community remained supportive of creating the connection.



Existing US 31 Sidewalk—The Community Spaces Connector route would compliment the existing US 31 sidewalk by providing connection which currently does not exist for the Community Building and by providing more direct connection between the sites.

The Community Spaces Connector would provide a pedestrian route for the residents of Tree Top Apartments (>> units) and would improve access to Wald Park and Vestavia Hills Elementary West for the residents west (behind) of City Hall.

The approach to Gold’s Gym from US 31 is shown below.







City Hall

Future Community Bldg.
(Currently Gold's Gym)

Tree Top Apartments

Southminster Presbyterian

 Bridge/Overlook
 Existing sidewalk



COMMUNITY SPACES
CONNECTOR



Benefits of the Community Spaces Connector include the following:

- Sidewalk ADA accessible surface to travel between Wald Park and the Community Building.
- ADA accessible transition between the parking area at the Community Building (Gold's Gym) and City Hall.
- Access for the community to enjoy the creek and natural area between Southminster Presbyterian and Tree Top Apartments.
- Connection between sidewalk system at Merryvale Road (connects to US31) and the end of the sidewalk at Mayland Lane (which continues along City Hall and could potentially become connected to other sections of the existing sidewalk system).
- More direct, efficient pedestrian route than what currently exists; more viable as a path for travel between the destinations.