

# ALTADENA VALLEY PARK MASTERPLAN

---



VESTAVIA HILLS

# ALTADENA VALLEY PARK MASTERPLAN

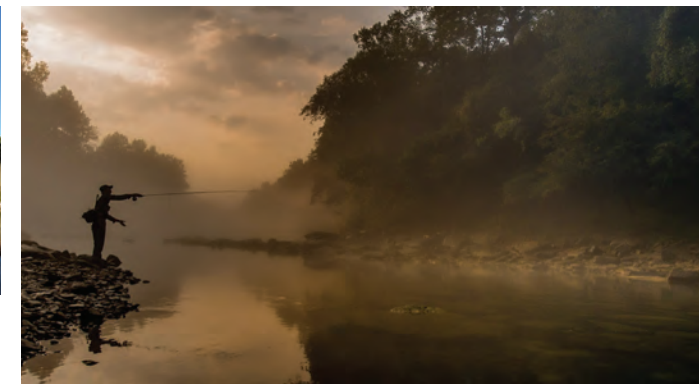


# ALTADENA VALLEY PARK MASTERPLAN



PROPOSED  
MASTER PLAN

# ALTADENA VALLEY PARK MASTERPLAN



## PHASE I LEGEND

- A. NEW CONNECTION TRAILS
- B. PAVILION & REST SHELTERS
- C. PLAYGROUND
- D. POND RESTORATION
- E. ENTRY SIGN
- F. DISC GOLF
- G. WILDFLOWER MASSES
- H. BRIDGE RESTORATION
- I. DRAINAGE IMPROVEMENTS
- J. PARKING
- K. STORAGE

## PHASE II LEGEND

- L. CANOE LAUNCH ACCESS
- M. CANOE LAUNCH
- N. CANOE LAUNCH TRAILS
- O. RESTROOM RESTORATION
- P. BMX PUMP TRACK
- Q. ARCHERY

## ADDITIONAL POTENTIAL USES:

- ARBORETUM and BIRDWATCHING
- FISHING AND SCOUTING GROUPS
- SMALL FESTIVALS
- FARMERS MARKET
- FOOD TRUCK RODEO
- GATHERINGS AND COMMUNITY EVENTS
- CONCERTS IN THE PARK
- YOGA

## PROPOSED MASTER PLAN

# ALTADENA VALLEY PARK MASTERPLAN



VESTAVIA HILLS



Alabama Beekeepers Association



VESTAVIA HILLS  
PARKS & RECREATION  
FOUNDATION



## POTENTIAL PARTNERSHIPS:

- CITY OF VESTAVIA HILLS
- CITY OF VESTAVIA HILLS PARKS AND RECREATION BOARD
- VESTAVIA HILLS PARK AND RECREATION FOUNDATION
- ALTADENA NEIGHBORHOOD ORGANIZATIONS
- LOCAL SCOUT TROOPS
- ALABAMA BEEKEEPERS ASSOCIATION
- ALABAMA AUDUBON
- COMMUNITY FOUNDATION OF GREATER BIRMINGHAM
- LOCAL BUSINESSES
- BIRMINGHAM BEEKEEPERS
- BIRMINGHAM URBAN MOUNTAINBIKE PEDALERS (BUMP)

POTENTIAL PARTNERS & FUNDING

# ALTADENA VALLEY PARK MASTERPLAN



WAYFINDING AND SIGNAGE



LOW IMPACT PARKING AND SITE CIRCULATION



NATURAL/SOFT MATERIAL SELECTIONS



RESIDENTIAL SCALE PARKING LOT (PLANTED, LOW DENSITY)

## PROPOSED PARKING & TRAILHEAD

THIS PLAN IS FOR GENERAL LAYOUT PURPOSES ONLY AND NOT INTENDED FOR USE AS A CONSTRUCTION DOCUMENT. THE SITE LAYOUT, INCLUDING BUT NOT LIMITED TO, BUILDING LOCATIONS, PARKING LAYOUT/MATERIALS, UTILITY LOCATIONS, ROAD IMPROVEMENTS, COMMON AREAS, AND/OR APPROXIMATE LOCATION OF THE OVERALL PREMISES IS SCHEMATIC IN NATURE AND NOT INTENDED TO DELINEATE THE FINAL PROJECT SCOPE. NOTHING CONTAINED HEREIN SHALL BE DEEMED TO LIMIT THE OWNER'S RIGHT TO CHANGE, ALTER, OR EXPAND THE SITE'S LAYOUT.

# ALTADENA VALLEY PARK MASTERPLAN



Ornamental Grass Border with Stone Path



Golden Rod Perennial - Meadow Plant



Southern Shield Fern



Joe Pye Weed - Meadow Plant



Broomsedge Meadow Plant



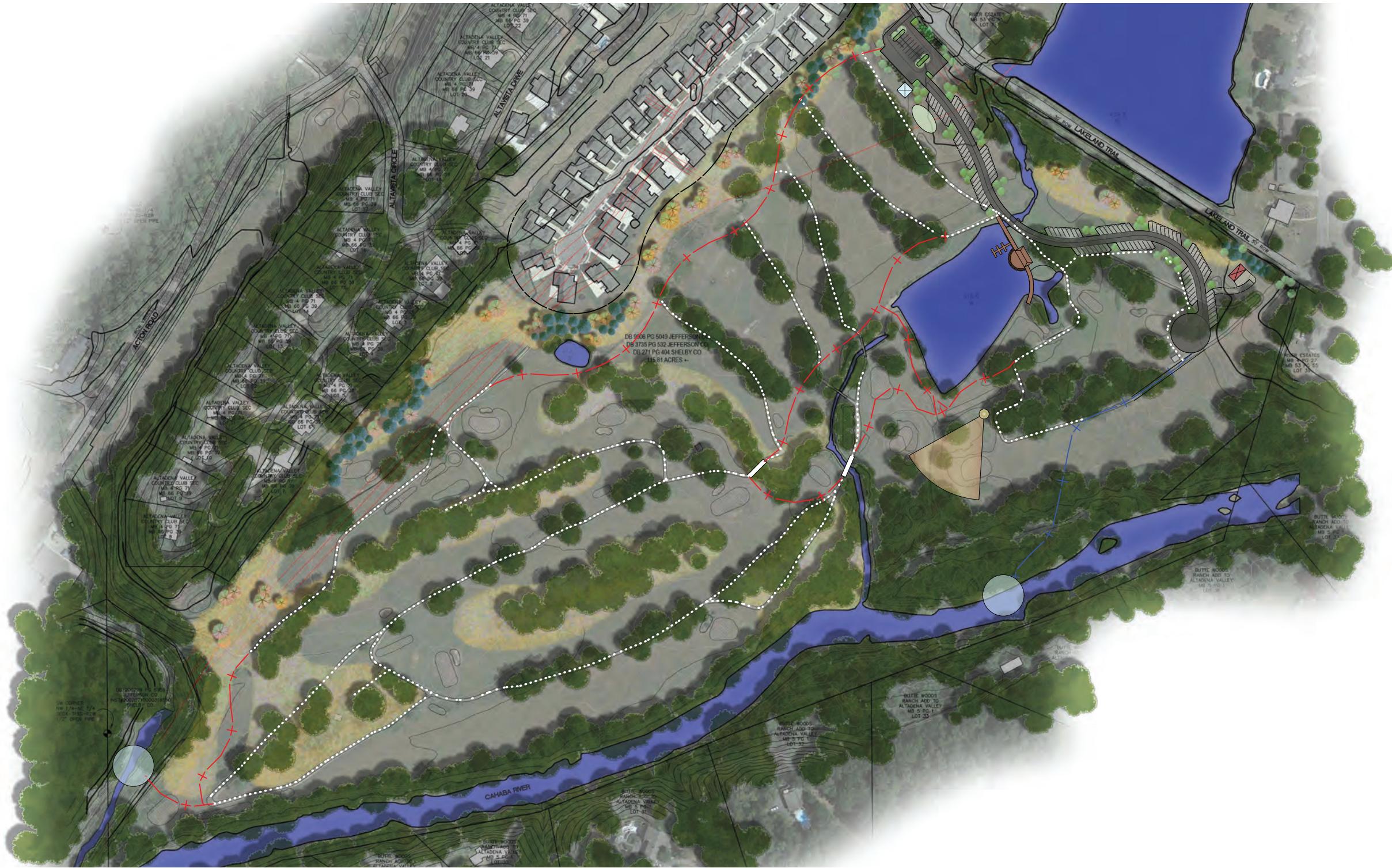
Oakleaf Hydrangea Shrub



Purple Cone Flower Perennial



Yarrow Perennial - Meadow Plant



WILDLIFE HABITAT RESTORATION



NATIVE WILDFLOWER/POLLINATOR MEADOWS



SHOWCASE NATIVE RIPARIAN VEGETATION



REMOVE INVASIVES, CLEAN-UP, RESTORE AND STABILIZE BANKS

PROPOSED  
WILDFLOWER AREAS

# ALTADENA VALLEY PARK MASTERPLAN



LAKE BOARDWALK/PIER



WAYFINDING



VIEWSHED LAYOUT



NATURAL EDGE RESTORE



FOOT BRIDGES



WATER INTERACTION



PATHS AT BOGGY AREAS



ACCESS CONTROLS



SIX FOOT WIDE PATHS OVER EXISTING CART PATH BASE



PLANNING FOR FLOODING EVENTS



CREEK OVERBANK DETENTION OPPORTUNITIES



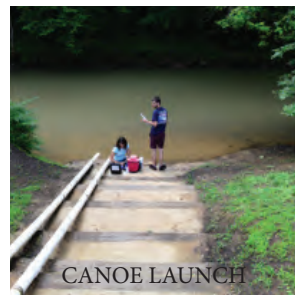
SOFT MATERIAL TRAILS WITH INTERPRETIVE SIGNAGE



## PROPOSED PATHS AND TRAILS



# ALTADENA VALLEY PARK MASTERPLAN



CANOE LAUNCH



CAHABA RIVER ACCESS



ENHANCE VIEWSHED



PLAN FOR FLOODING



CATCH AND RELEASE



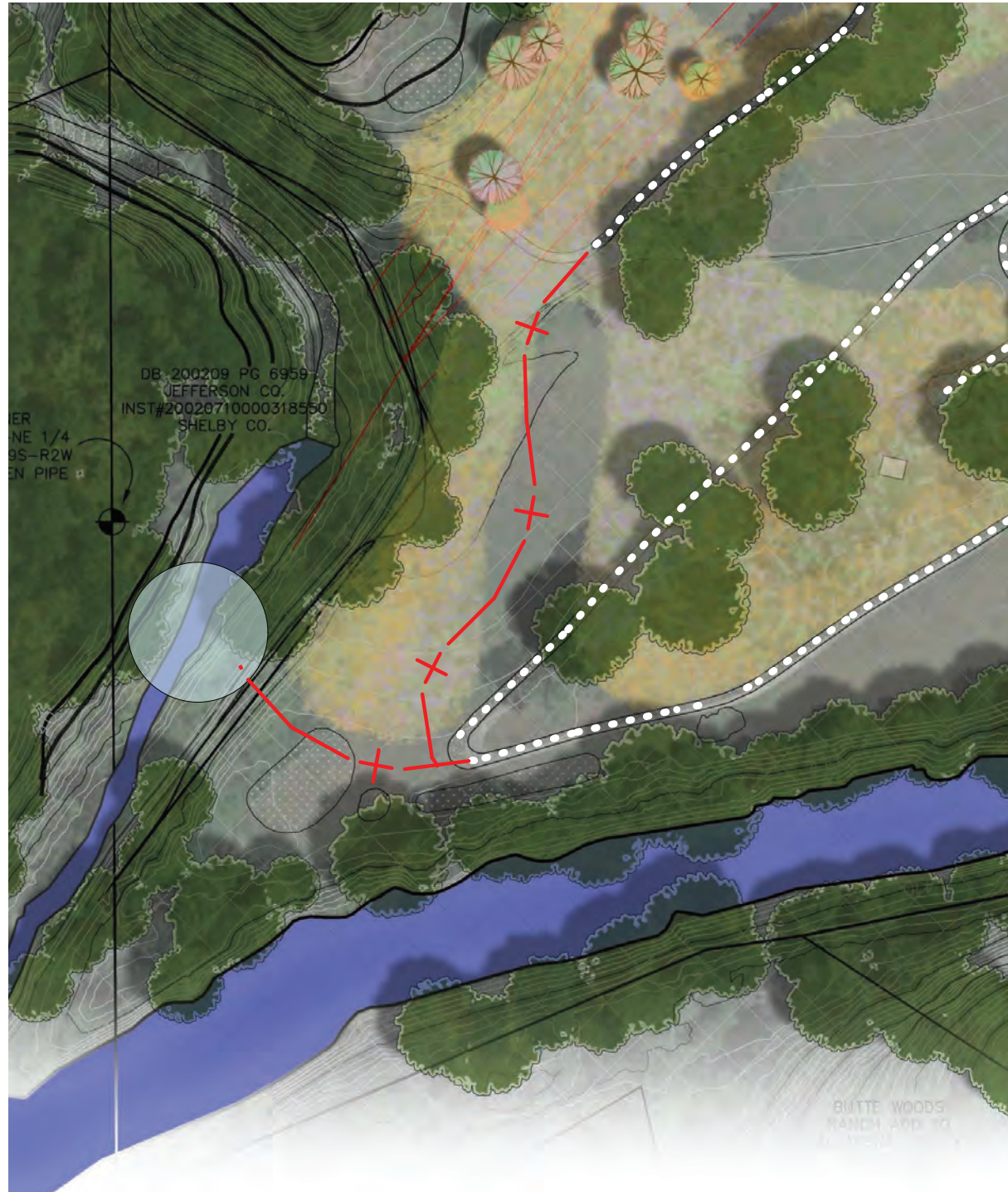
NATIVE FISH



CANOE SAFETY



POTENTIAL NATIVE FISH HABITAT OPPORTUNITIES



WATER SAFETY AND PADDLING EDUCATION OPPORTUNITIES



CANOE TRAILS AND BLUEWAY CONNECTION OPPORTUNITIES



WATERQUALITY EDUCATION OPPORTUNITIES

**PROPOSED  
CANOE LAUNCH AND RIVER  
ACCESS**

# ALTADENA VALLEY PARK MASTERPLAN



YOUTH CLASSES



VOLUNTEER



GROUP CLASSES



REST SHELTERS



RIVER QUALITY SURVEYS



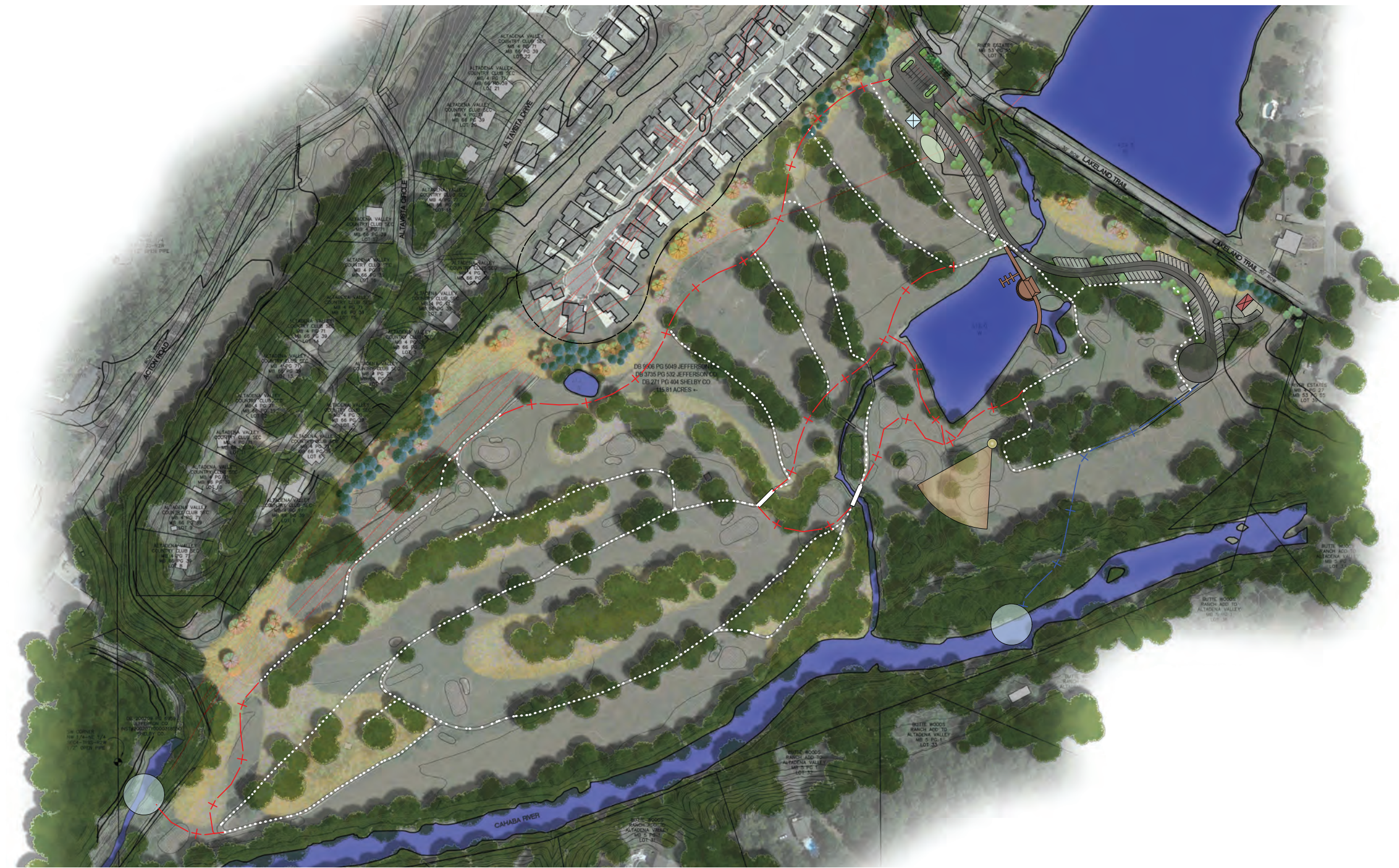
FISHING



BIRDWATCHING



WATERSHED EDUCATION OPPORTUNITIES



NEIGHBORHOOD FESTIVALS AND PARK EVENTS



CONNECTION TO OTHER PARKS ALONG CAHABA



HABITAT RESTORATION AND SURVEY OPPORTUNITES

## OTHER USES & ACTIVITIES

# ALTADENA VALLEY PARK MASTERPLAN



ANY QUESTIONS...?

THIS PLAN IS FOR GENERAL LAYOUT PURPOSES ONLY AND NOT INTENDED FOR USE AS A CONSTRUCTION DOCUMENT. THE SITE LAYOUT, INCLUDING BUT NOT LIMITED TO, BUILDING LOCATIONS, PARKING LAYOUT/MATERIALS, UTILITY LOCATIONS, ROAD IMPROVEMENTS, COMMON AREAS, AND/OR APPROXIMATE LOCATION OF THE OVERALL PREMISES IS SCHEMATIC IN NATURE AND NOT INTENDED TO DELINEATE THE FINAL PROJECT SCOPE. NOTHING CONTAINED HEREIN SHALL BE DEEMED TO LIMIT THE OWNER'S RIGHT TO CHANGE, ALTER, OR EXPAND THE SITE'S LAYOUT.