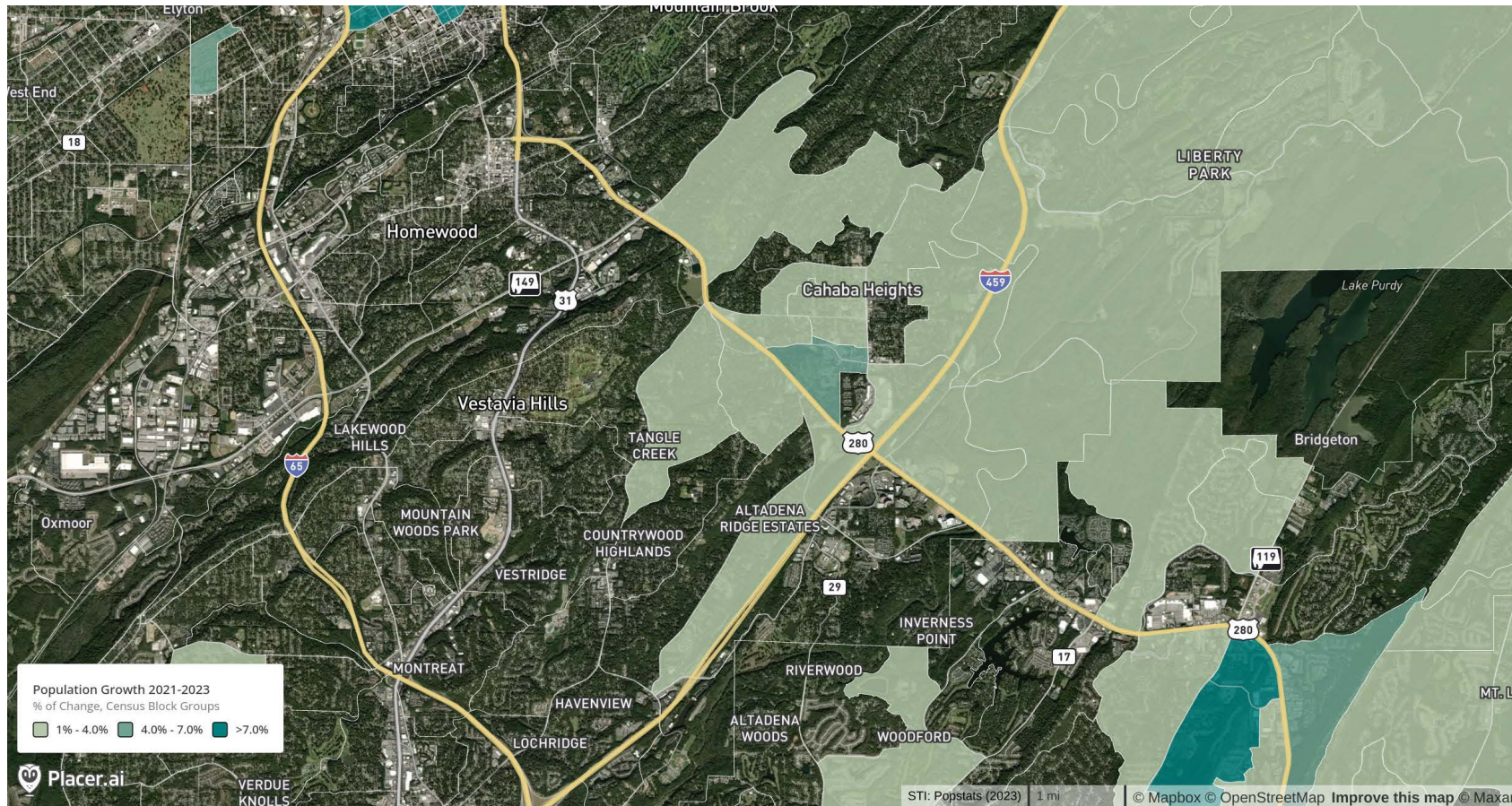
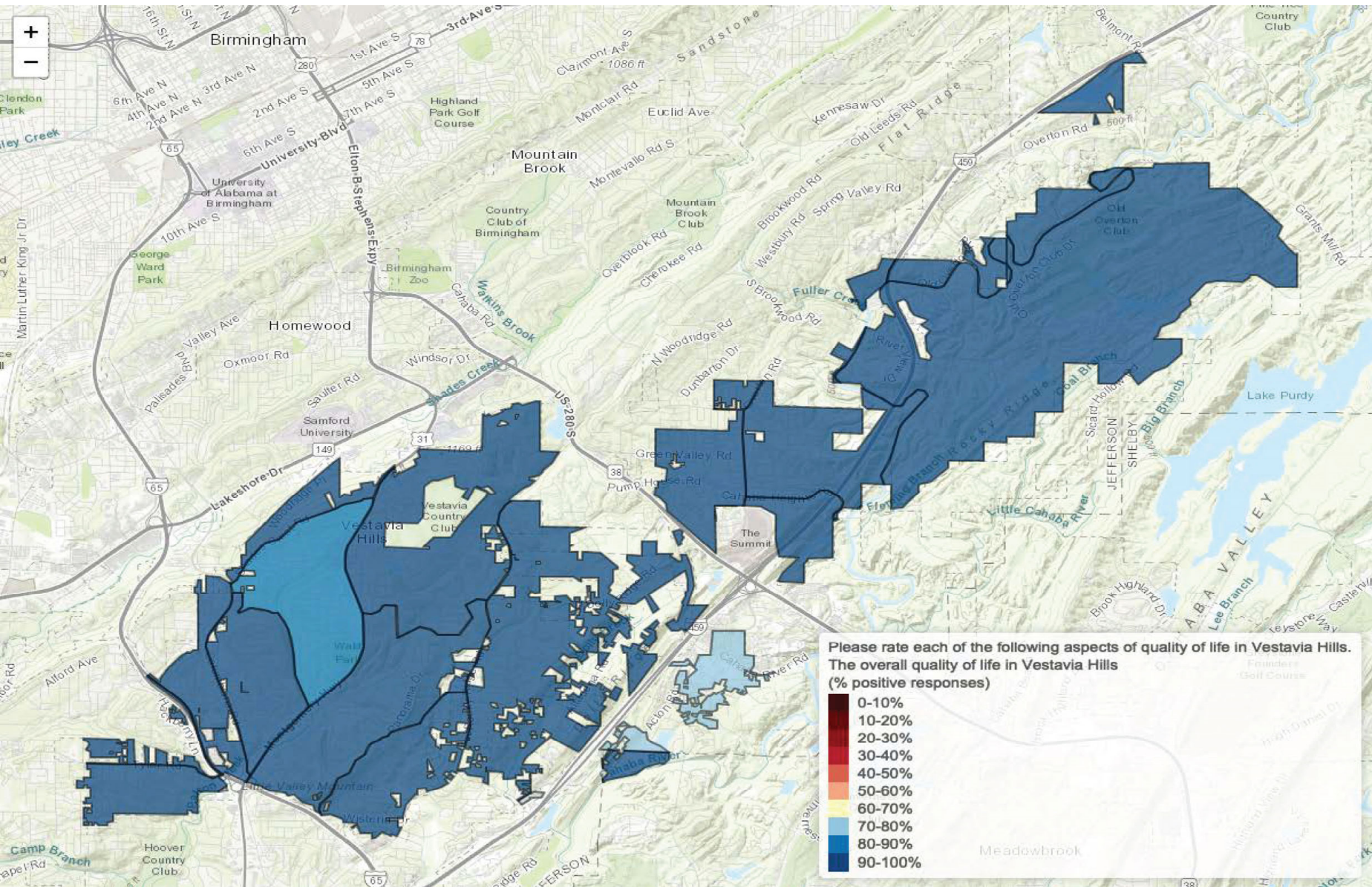


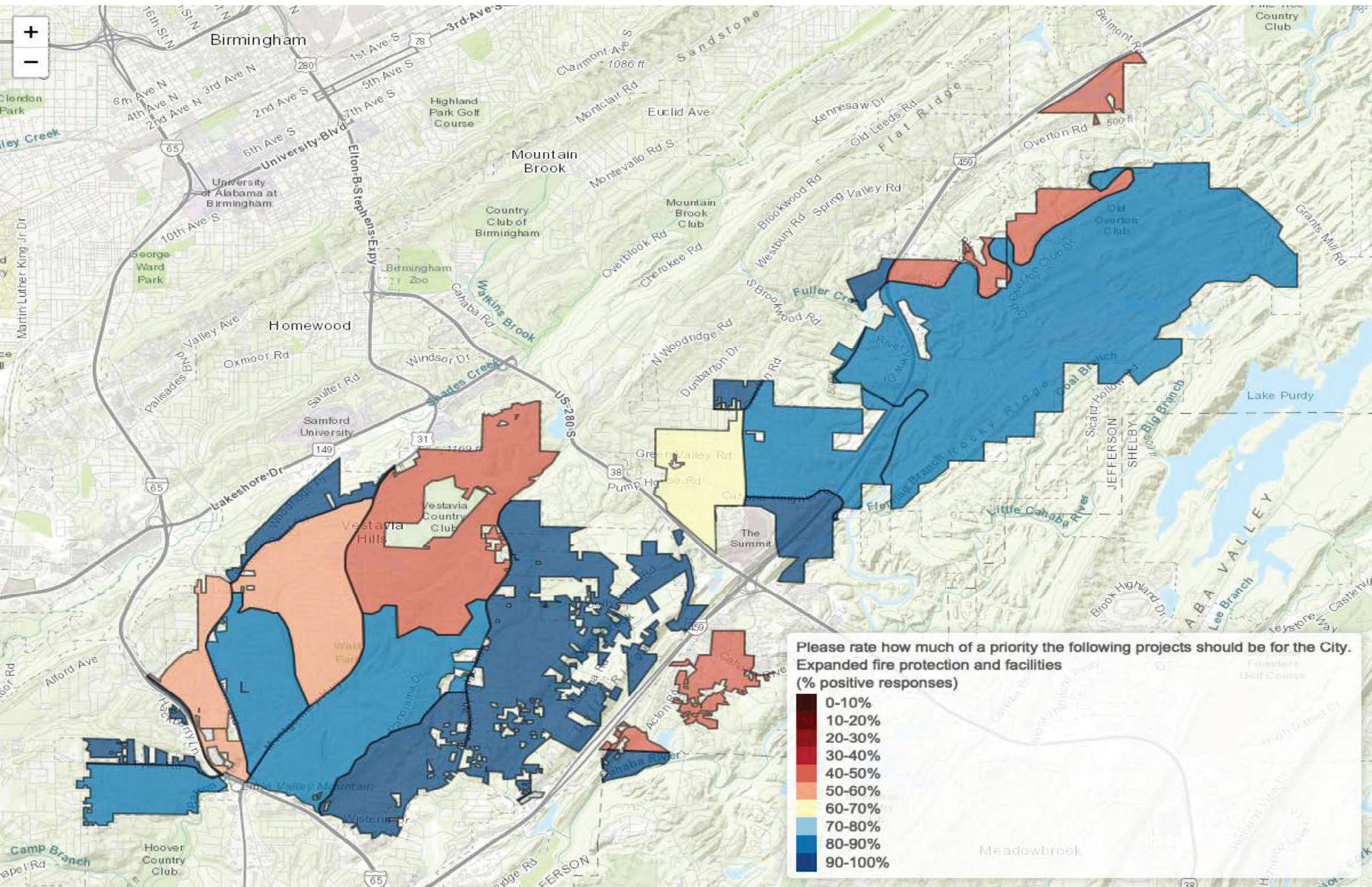
Vestavia Hills is Growing to the East

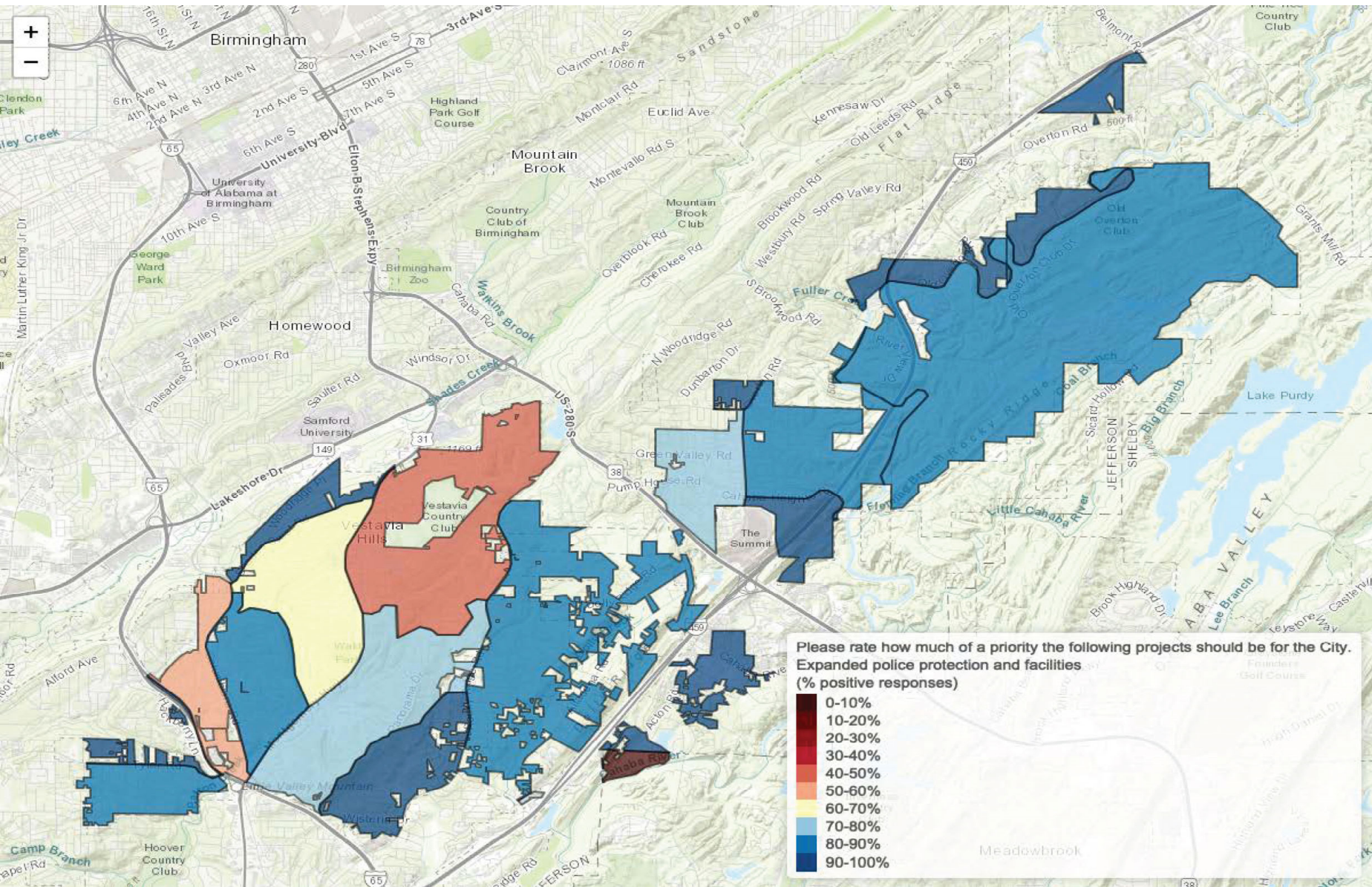


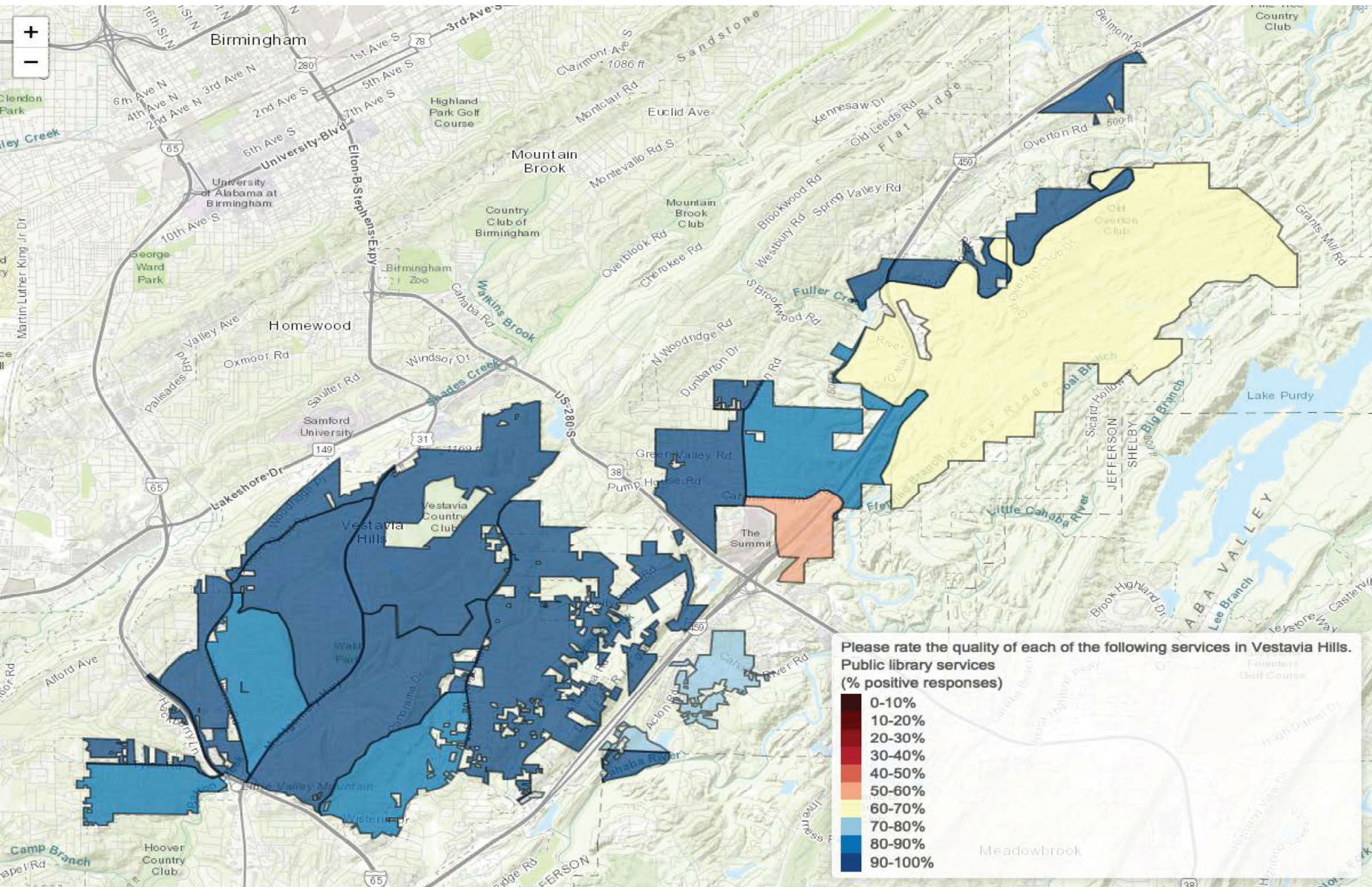
2025 Citizen Survey

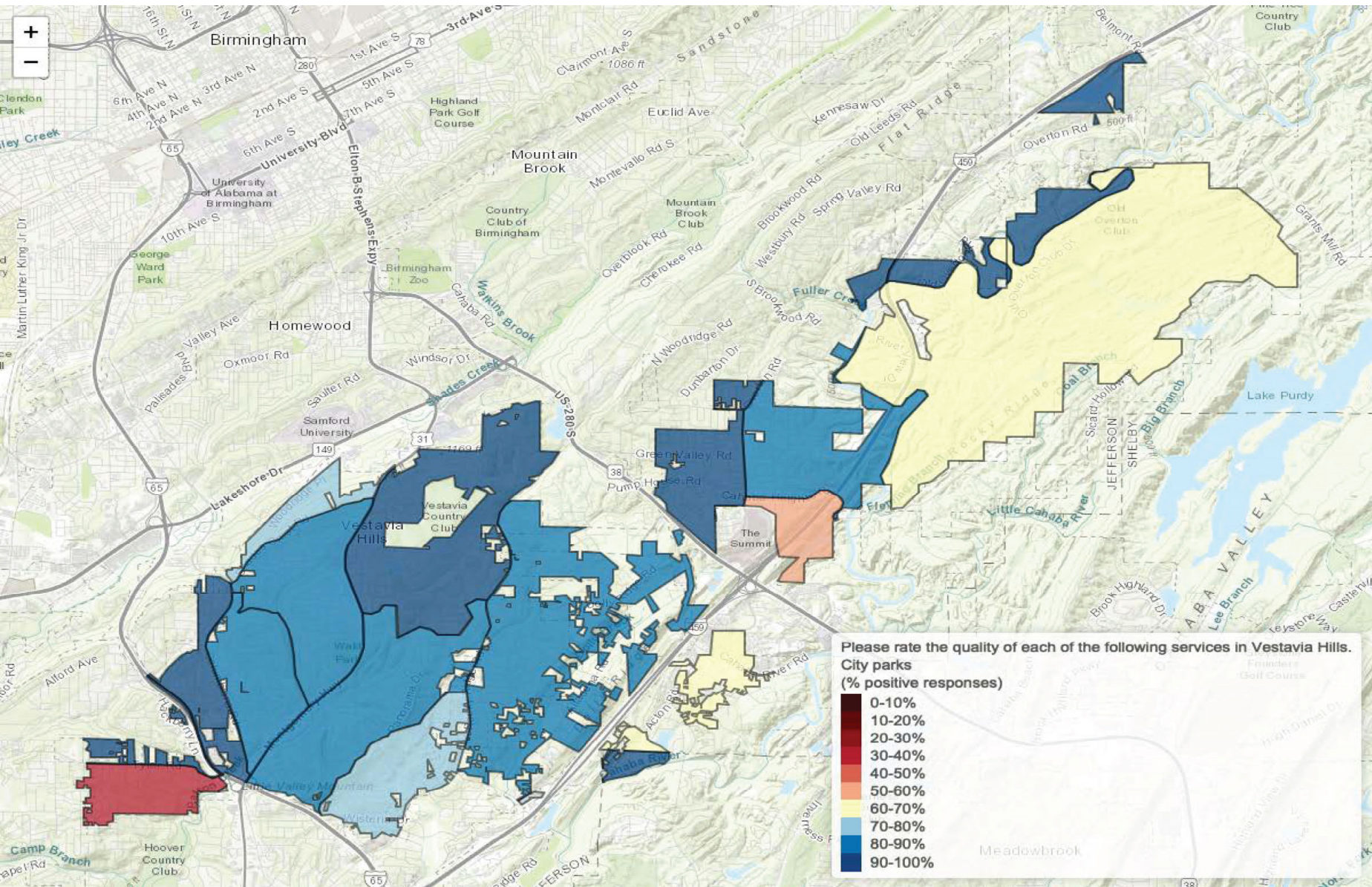
Overall Results – Maps





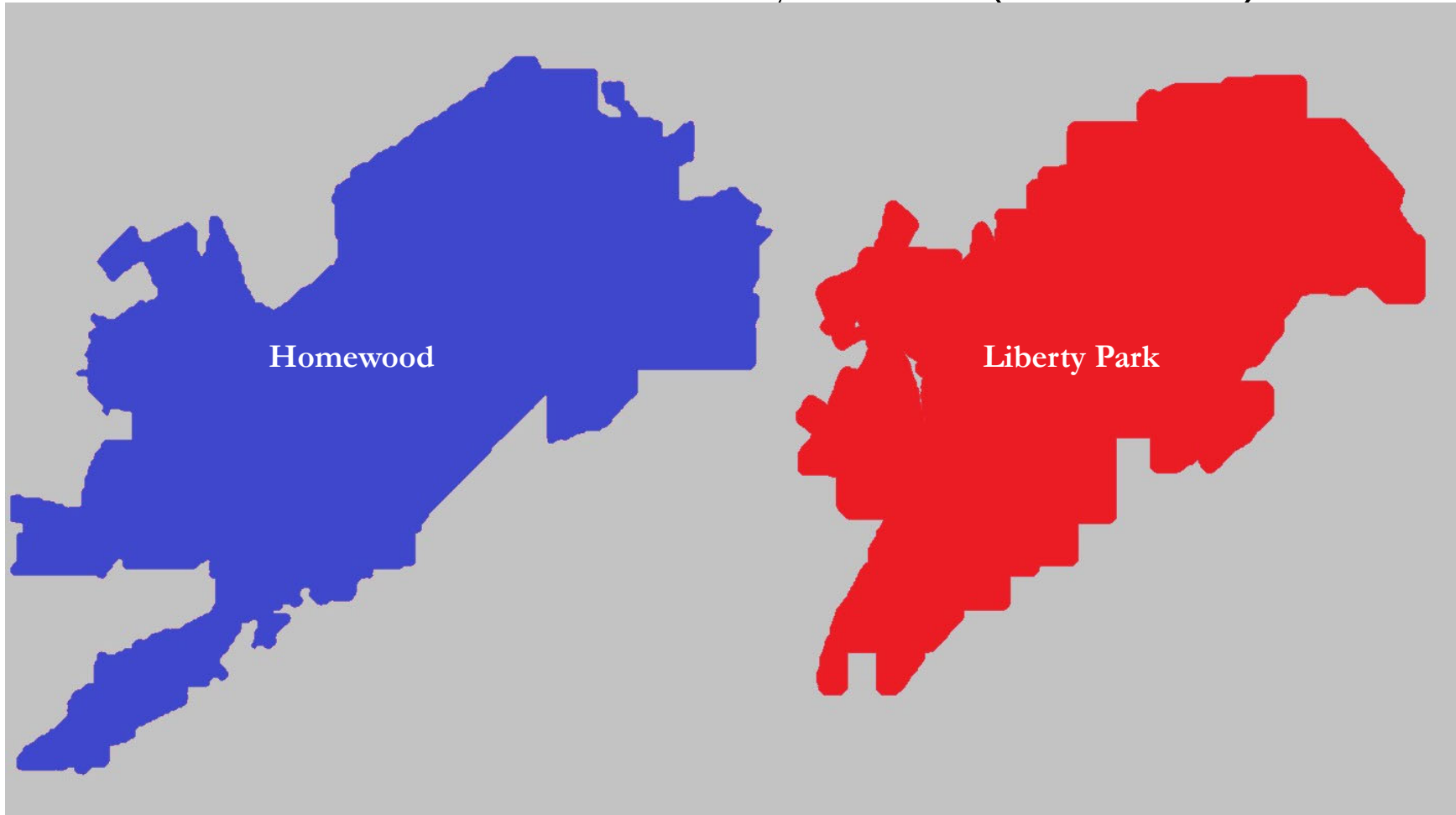






Vestavia Hills Police Department

Homewood vs. Liberty Park (to scale)



Comparisons

- Hoover PD:
 - 191 sworn officers
 - covers 48 square miles
 - population of 92,350
 - operates out of six facilities
- Oxford PD:
 - 80 sworn officers
 - covers 31 square miles
 - population of 22,078
 - operates out of 5 facilities
 - Oxford PD has more specialized emergency response equipment than ALEA

Comparisons

- Bessemer PD:
 - 100 sworn officers
 - covers 40 square miles
 - population of 30,000
 - operates out of 4 facilities
 - BPD is looking to build a new police department in the near future
- Vestavia Hills PD:
 - 110 sworn officers
 - covers 20 square miles
 - population of 39,102
 - operates out of 2 facilities: primary municipal building and small substation in Cahaba Heights



VESTAVIA HILLS LIBRARY IN THE FOREST



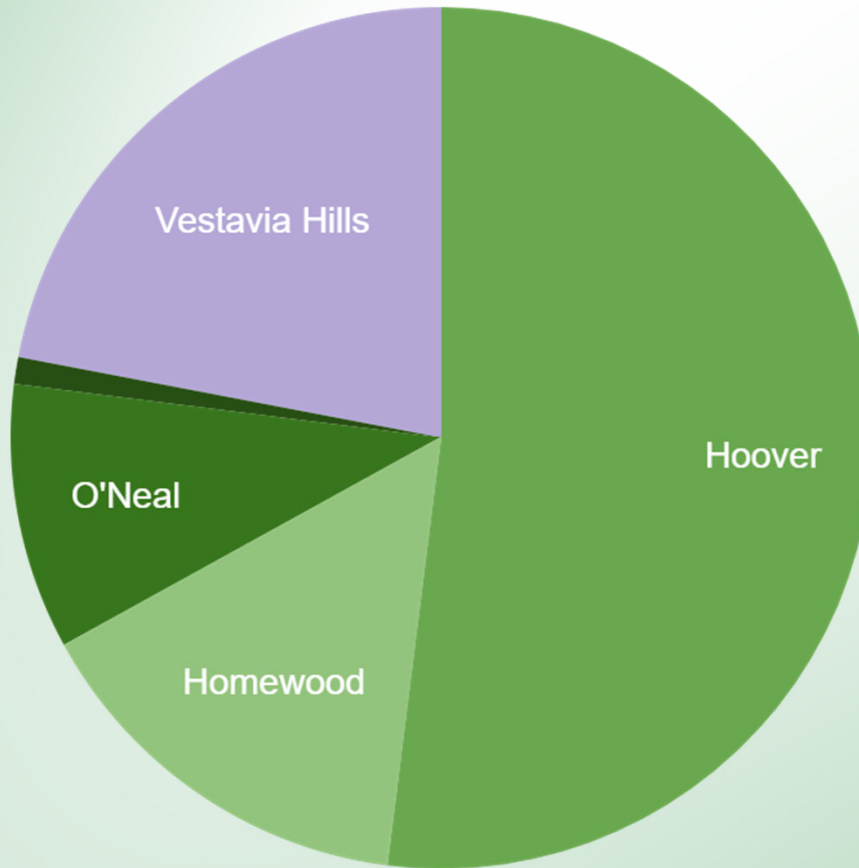
Source: Trade Area Feb 1, 2024 - Jan 31, 2025 www.placer.ai.



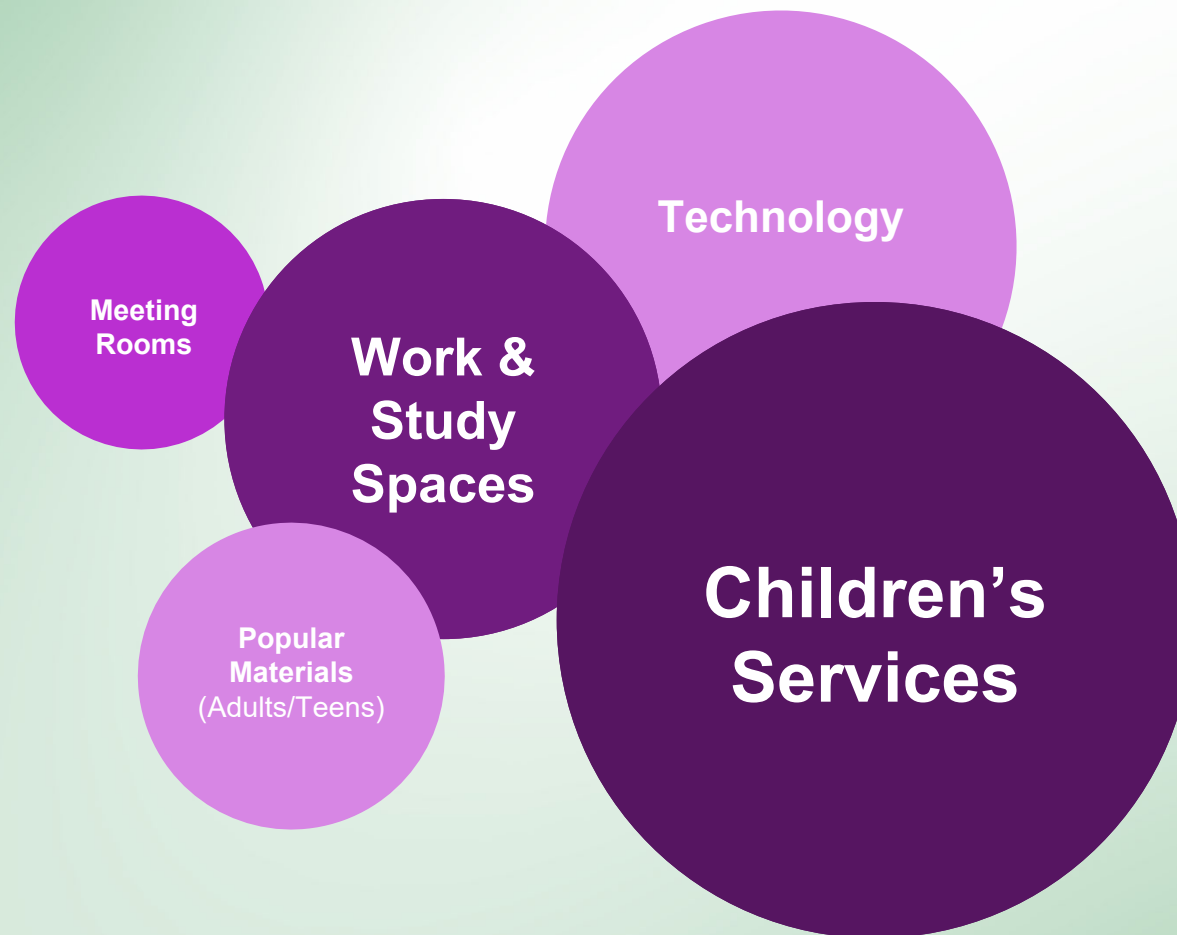


Liberty Park - Leakage 78%

Source: Trade Area Feb 1, 2024 - Jan 31, 2025 www.placer.ai.



What citizens want from an Eastside Library.



Diamonds and Rectangles

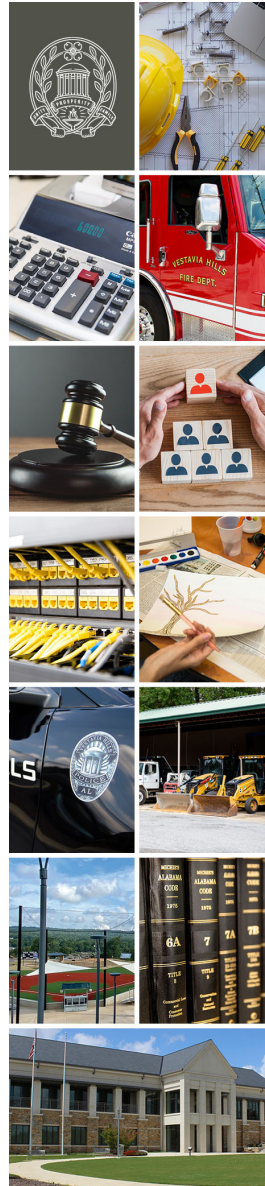
Diamonds

Wald Park	1,838 hours	1,298 baseball hours
Cahaba Heights	2,009 hours	1,797 baseball hours
Liberty Park	2,615 hours	2,615 softball/baseball hours
TOTAL	6,462 hours	5,710 softball/baseball hours
	17.7 per day	15.6 per day

Rectangular Fields

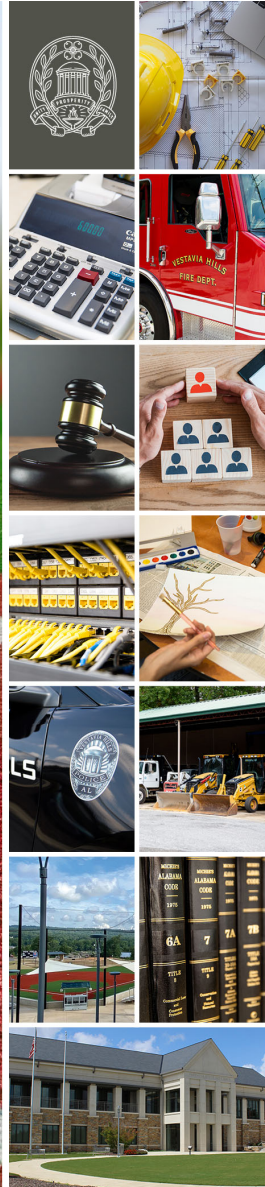
SHAC	2,568 hours	1,230 soccer hours
Liberty Park Grass	1,440 hours	1,440 soccer hours*
TOTAL	4,008 hours	2,670 soccer hours
	11 per day	7.3 per day

**Exclusive to VHSC*



If You Build It ...

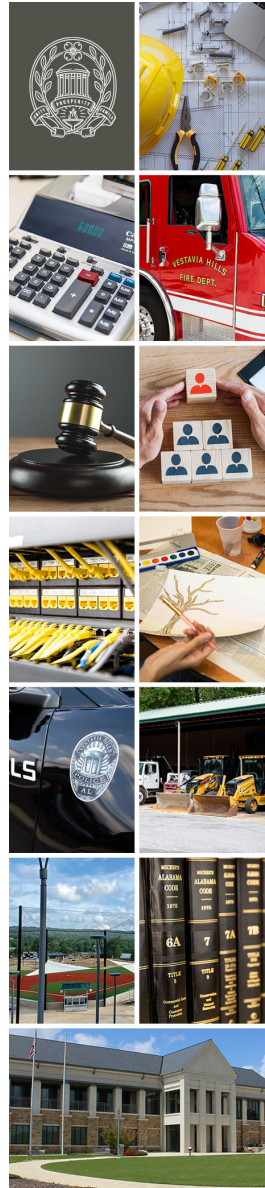
Demand and need for diamonds:
59% greater than rectangular fields



Deployment East of US 280

Two areas, each with unique delivery challenges:

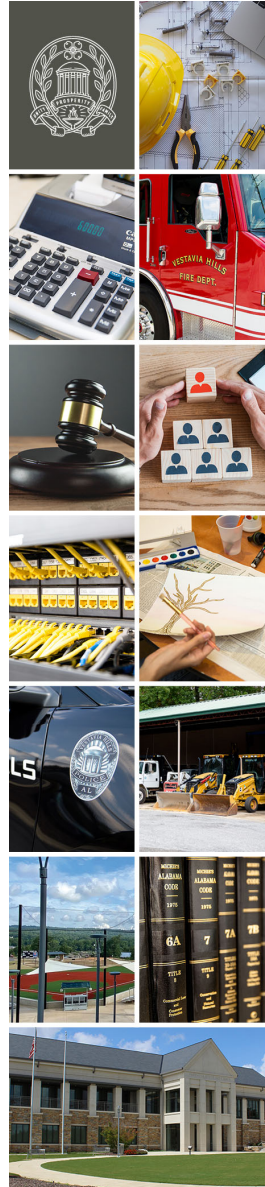
- Patchwork Farms Neighborhoods
- Liberty Park Neighborhoods



Patchwork: Response

90th Percentile of response times for 2024:

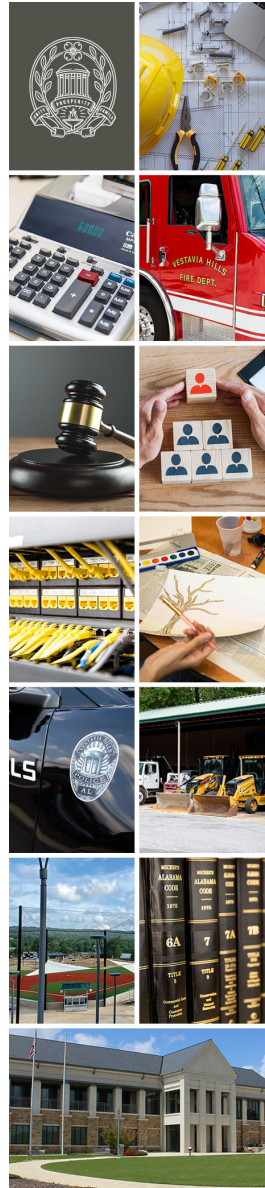
- 7:53 for entire city
- 9:11 for the Patchwork neighborhood



Liberty Park: Response

90th Percentile of response times for 2024:

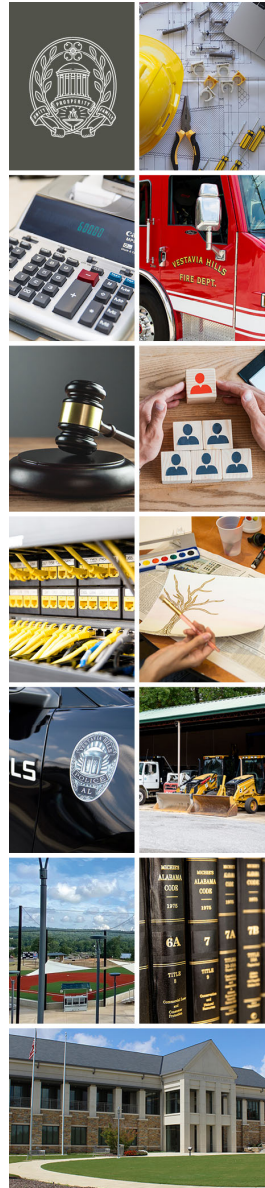
- 7:53 for entire city
- 8:53 for the Liberty Park neighborhood



Liberty Park: Response

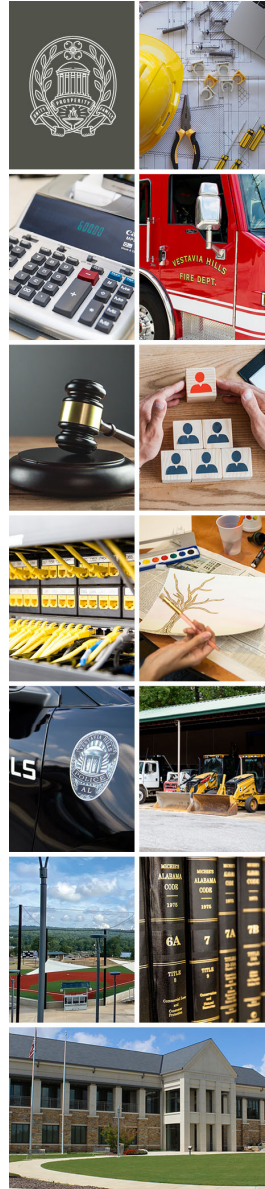
Expanding Community:

- 140% increase in calls for service since 2011
 - 16% of responses are to 451 Liberty Parkway (Long Leaf)
- 8% of responses in Liberty Park are simultaneous requiring assets from outside of the district



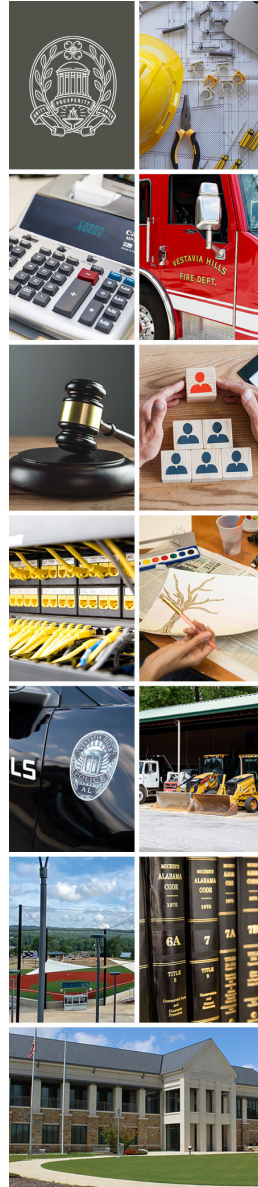
Liberty Park: A Changing Landscape

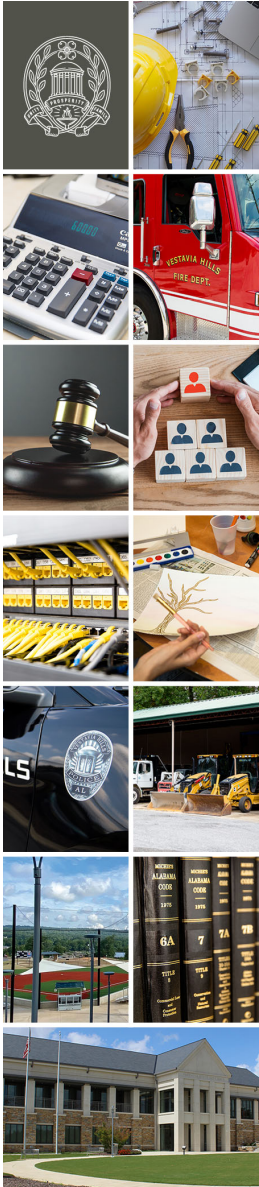
Livano (LIV Development)



Liberty Park: A Changing Landscape

Medical Properties Trust





SHAC: Future Masterplan

Conceptual Master Plan - Ver. F



VIEWPORT
SCALE: 1" = 120'

SITE DATA	
PARKS & LEISURE	
PLAYGROUND	13,680SF
RESTROOM BUILDING	1,200SF
PICNIC PAVILIONS	3
SHOP/FIELD MAINTENANCE	3,000SF
MATERIAL DING	1,000SF
LIBRARY	12,000SF
POLICE	25,000SF
PUBLIC SERVICES - OUTDOOR AREA	4,000SF
PARKING	
REGULAR	229 SPACES
SECURE	20 SPACES

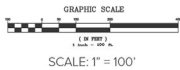


SICARD HOLLOW ATHLETIC COMPLEX

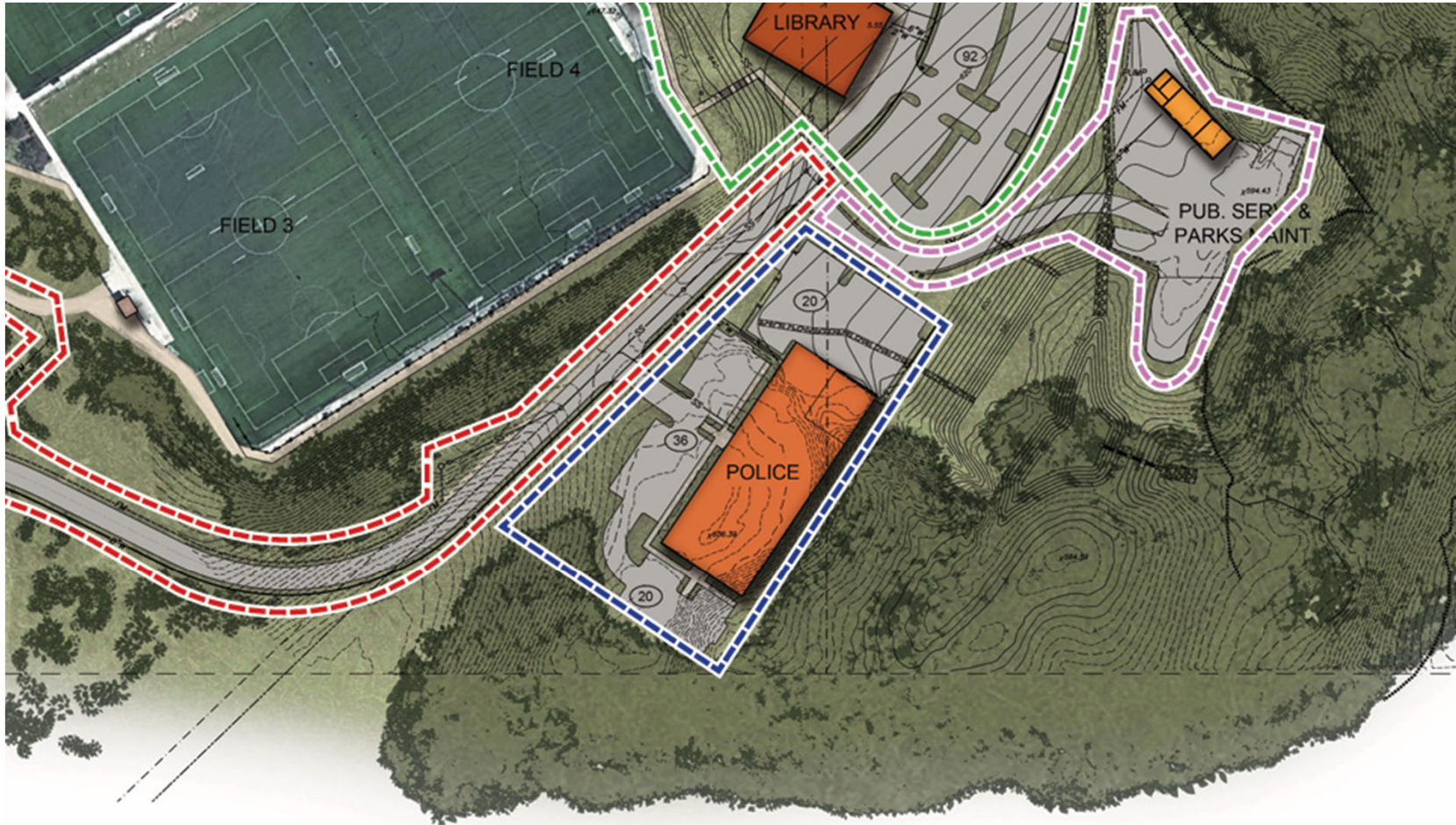
VESTAVIA HILLS, ALABAMA

February 12, 2025

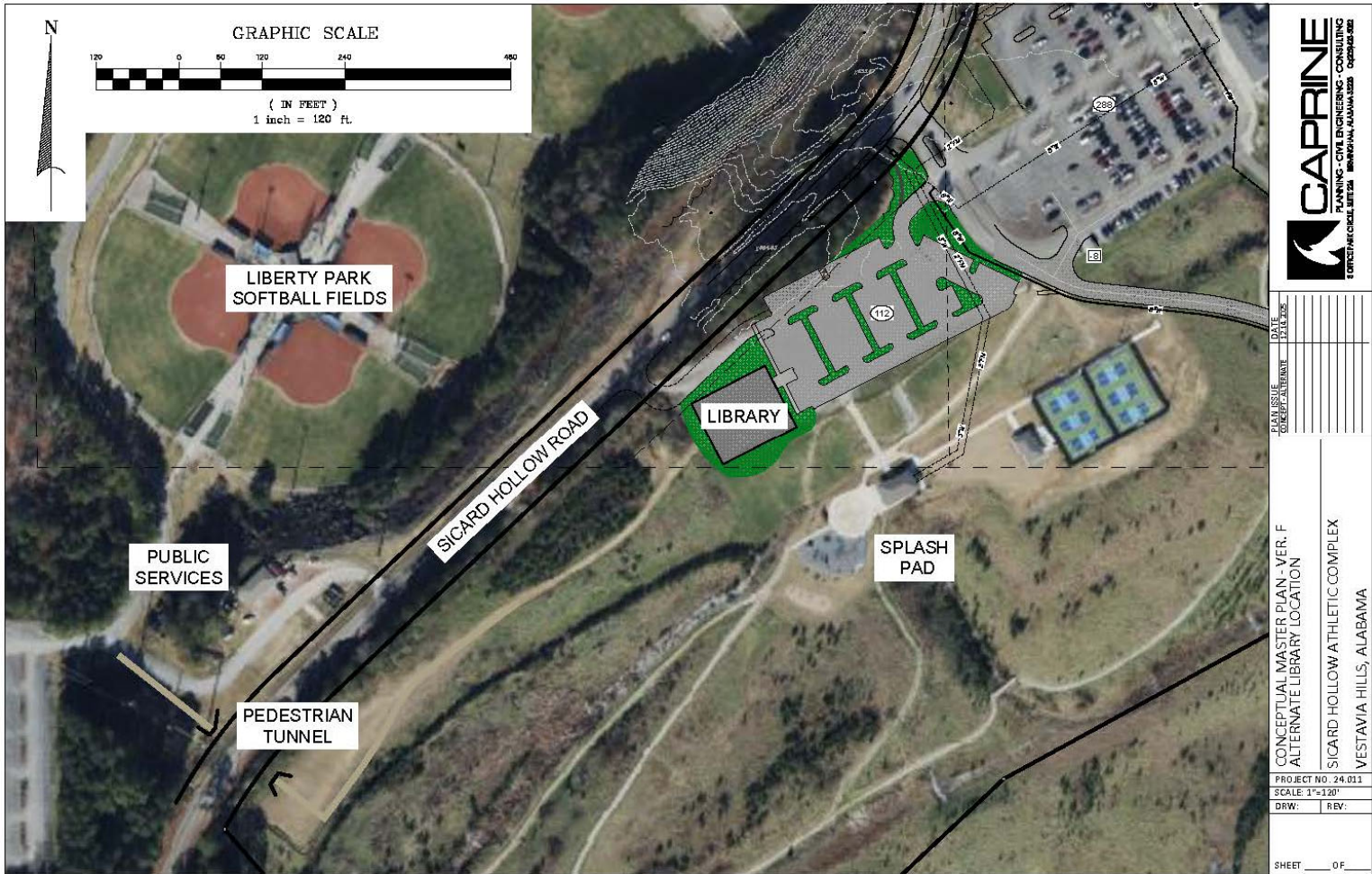
CONSTRUCTION PHASE		
ENTRANCE ROAD	BACK OF HOUSE	LIBERTY PARK FIELDS
\$1,395,821.73	\$1,301,480.90	\$11,287,629.71
POLICE	LIBRARY / PLAYGROUND	FUTURE
\$16,387,664.51	\$10,230,998.71	



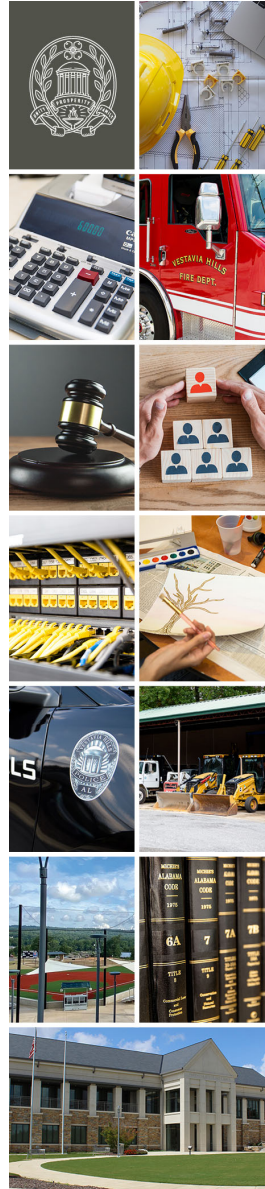
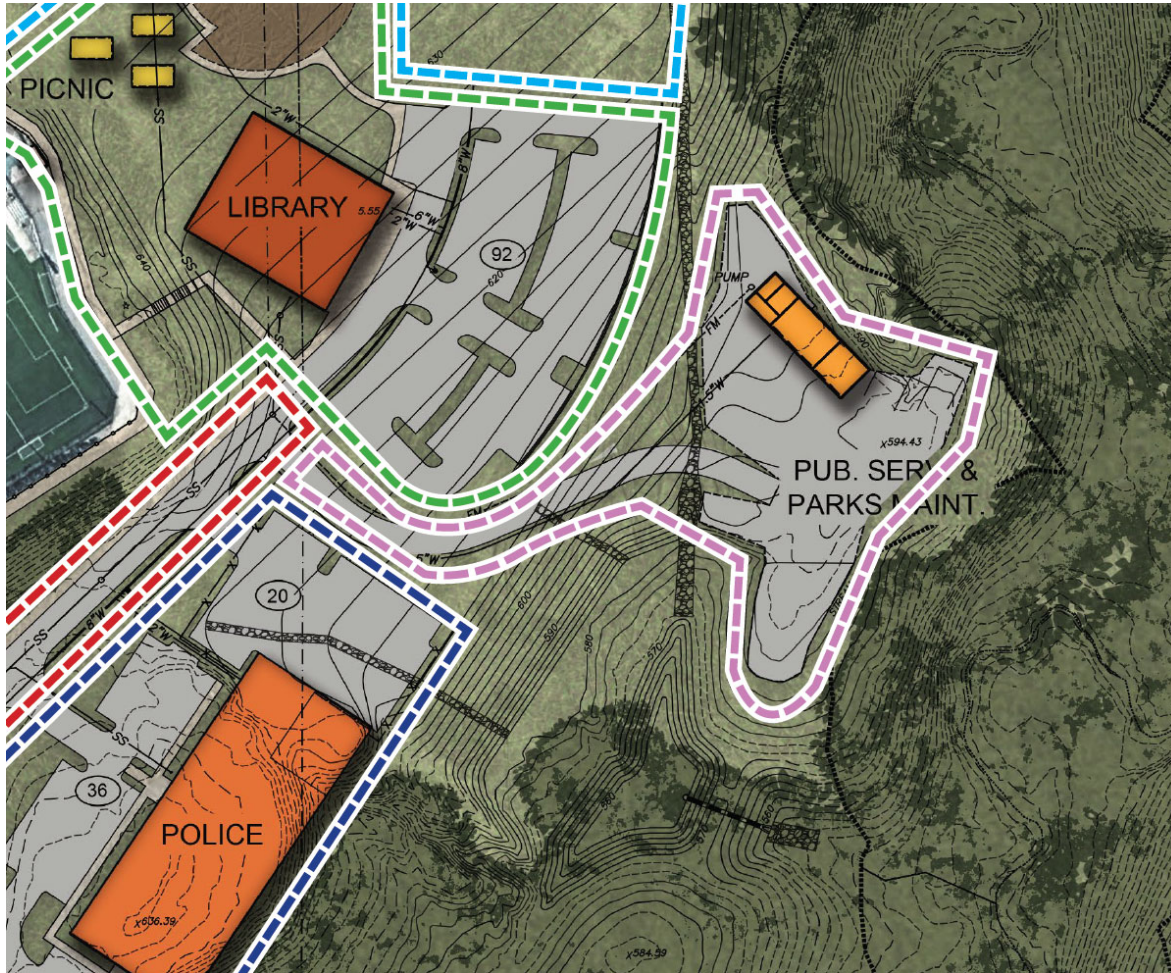
VHPD East Operations Center



SHAC: Alternative Library Scheme



Proposed Shared Maintenance Facility



Existing Maintenance Facility

Sicard Hollow Road

