

TREE SAVE PLAN

WALD PARK INITIAL SITE PACKAGE

VESTAVIA HILLS, ALABAMA



WALD PARK INITIAL SITE PACKAGE – VICINITY MAP



WALD PARK INITIAL SITE PACKAGE – AERIAL



PROPOSED SITE 'A' DEVELOPMENT

PROPOSED SITE 'B' PARK IMPROVEMENTS

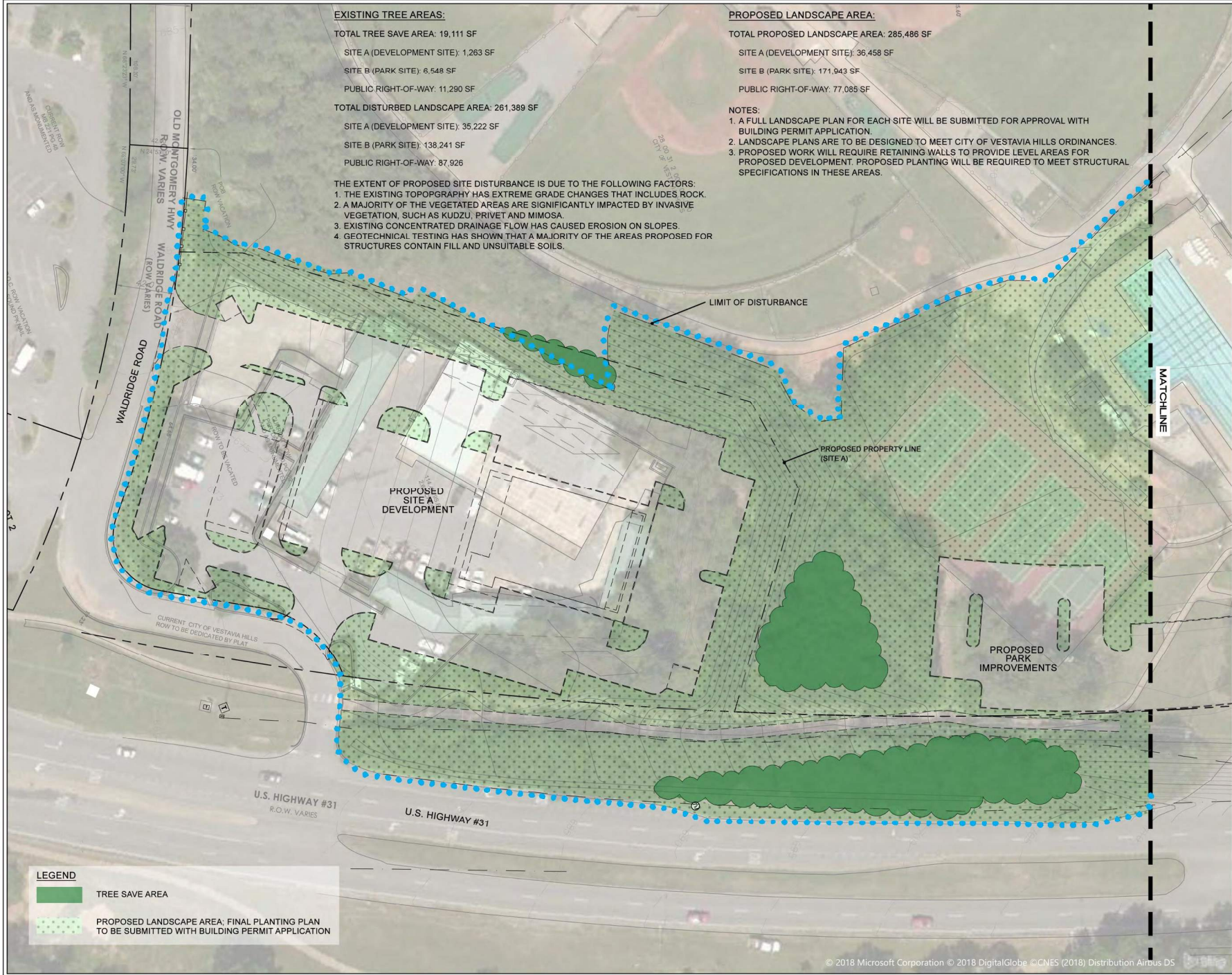
WALD PARK INITIAL SITE PACKAGE – AERIAL OF PROPOSED WORK

SITE DISTURBANCE FACTORS:

- THE EXISTING TOPOGRAPHY HAS EXTREME GRADE CHANGES.
- THE EXISTING SITE REQUIRES ROCK EXCAVATION.
- EXISTING VEGETATION IMPACTED BY INVASIVE VEGETATION – KUDZU, PRIVET AND MIMOSA.
- EXISTING DRAINAGE AND EROSION ISSUES.
- GEOTECHNICAL TESTING INDICATES EXISTING UNSUITABLE SOILS.



WALD PARK INITIAL SITE PACKAGE – SITE DISTURBANCE AERIAL



WALD PARK - INITIAL SITE PACKAGE

TREE SAVE SUBMITTAL

THE CITY OF VESTAVIA HILLS
1173 Merryvale Rd, Vestavia Hills, AL 35216
12-035.00



WILLIAMS + BLACKSTOCK
ARCHITECTS
ARCHITECTURE INTERIORS PLANNING
2204 FIRST AVENUE SOUTH, SUITE 200
BIRMINGHAM, ALABAMA 35203

ISSUE DATE:
AUGUST 20, 2018

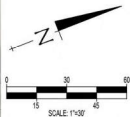
REVISIONS:

NO.	DATE	DESCRIPTION

PROJECT NUMBER
18-035.00

DRAWING TITLE
TREE SAVE PLAN (SOUTH)

SHEET NUMBER
LA1.0





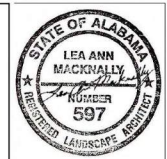
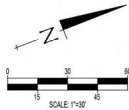
VIEW WEST OF HILLSIDE ADJACENT TO PROPOSED DEVELOPMENT. EXTENSIVE KUDZU AND EXISTING BRADFORD PEAR TREES (CANOPIES HAVE BEEN DAMAGED DUE TO COLD / WIND).



VIEW SOUTH OF HILLSIDE ALONG HWY. 31: PREDOMINANTLY PINES WITH UNDERSTORY OF INVASIVE PRIVET AND MIMOSA TREES.

*REFERENCE NOTES AND CALCULATIONS ON LA1.0 FOR DISTURBED AND PROPOSED LANDSCAPE AREAS.

- LEGEND**
- TREE SAVE AREA
 - PROPOSED LANDSCAPE AREA; FINAL PLANTING PLAN TO BE SUBMITTED WITH BUILDING PERMIT APPLICATION



**WALD PARK - INITIAL SITE PACKAGE
TREE SAVE SUBMITTAL**

THE CITY OF VESTAVIA HILLS
1773 Merryvale Rd., Vestavia Hills, AL 35216
18-035.00



ARCHITECT OF RECORD:

WILLIAMS • BLACKSTOCK
ARCHITECTS
ARCHITECTURE INTERIORS PLANNING
2204 FIRST AVENUE SOUTH, SUITE 200
BIRMINGHAM, ALABAMA 35203

ISSUE DATE:
AUGUST 20, 2018

REVISIONS:

NO.	DATE	DESCRIPTION
-----	------	-------------

PROJECT NUMBER
18-035.00

DRAWING TITLE
TREE SAVE PLAN (NORTH)

SHEET NUMBER
LA1.1

EXISTING TREE AREAS:

	<u>TOTAL TREE SAVE AREAS:</u>	<u>TOTAL DISTURBED LANDSCAPE AREAS:</u>
SITE A (Development Site):	1,263 SF	35,222 SF
SITE B (Wald Park Site):	6,548 SF	138,241 SF
PUBLIC RIGHT-OF-WAY:	11,290 SF	87,926 SF
TOTAL	19,111 SF	261,389 SF

PROPOSED LANDSCAPE AREAS:

	<u>TOTAL TREE SAVE AREAS:</u>	<u>PROPOSED LANDSCAPE AREAS:</u>
SITE A (Development Site):	1,263 SF	36,458 SF
SITE B (Wald Park Site):	6,548 SF	171,943 SF
PUBLIC RIGHT-OF-WAY:	11,290 SF	77,085 SF
TOTAL	19,111 SF	285,486 SF

WALD PARK IMPROVEMENTS PACKAGE

PROPOSED TREE SAVE / LANDSCAPE IMPROVEMENTS PLAN

VESTAVIA HILLS, ALABAMA

PROPOSED LANDSCAPE AREAS:

- A FULL LANDSCAPE PLAN FOR EACH SITE WILL BE SUBMITTED FOR APPROVAL WITH BUILDING PERMIT APPLICATION.
- LANDSCAPE PLANS ARE DESIGNED TO MEET CITY OF VESTAVIA HILLS ORDINANCES.
- PROPOSED WORK ON SITE 'A' (DEVELOPMENT SITE) WILL REQUIRE RETAINING WALLS TO PROVIDE LEVEL AREAS FOR PROPOSED DEVELOPMENT. PROPOSED PLANTING WILL BE REQUIRED TO MEET STRUCTURAL SPECIFICATIONS IN THESE AREAS.



EXISTING WALD PARK AERIAL

EXISTING OPEN GREEN SPACES

30,704 sf

GREEN SPACE
(EXISTING)

EXISTING WALD PARK AERIAL



EXISTING TREE AREAS

142,451 sf

71,937 sf

34,505 sf

EXISTING WALD PARK AERIAL



WALD PARK IMPROVEMENTS

**ESTIMATED 450,000 sf
TOTAL PROPOSED LANDSCAPE AREA
WITH NEW PREMIERE PARK SPACES,
LANDSCAPING AND TREE-LINED WALKS.**

143,966 sf

133,088 sf

120,127 sf

50,611 sf

WALD PARK IMPROVEMENTS

WALD PARK - PROPOSED LANDSCAPE AREAS:

	<u>EXISTING AREAS:</u>	<u>PROPOSED IMPROVEMENT AREAS:</u>
OPEN PARK SPACE	30,704 SF	264,093 SF
TREES / LANDSCAPE SPACE	248,893 SF	183,699 SF
TOTAL:	279,597 SF	447,792 SF
NET LANDSCAPE AREA IMPROVEMENTS:		+ 168,195 SF + 60%

ALL AREAS ARE ESTIMATED AND WILL BE CONFIRMED IN BUILDING PERMIT APPLICATION.