

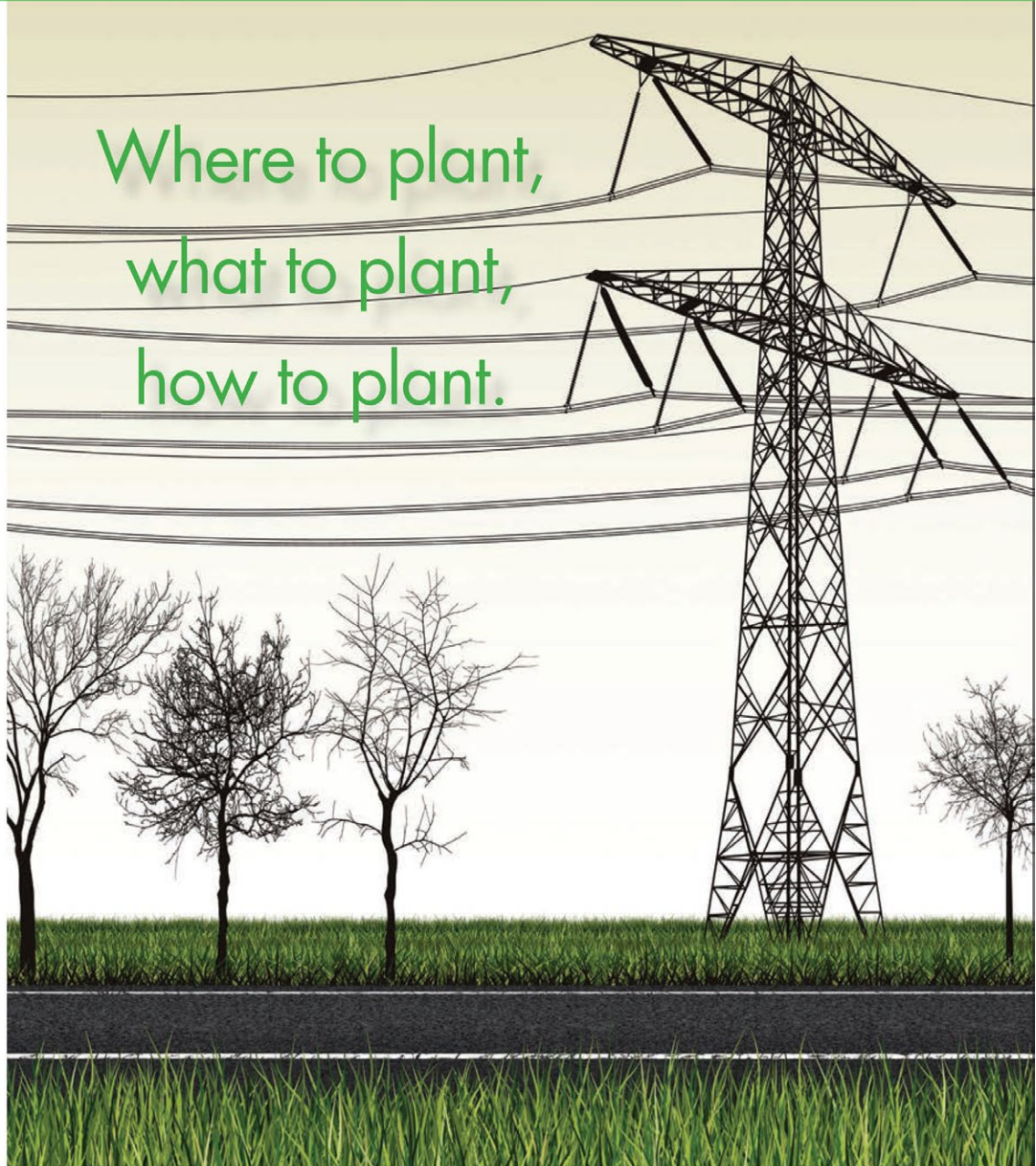


# Plant the Right Tree in the Right Place



At Alabama Power, we are responsible for providing safe and reliable energy to our customers at the lowest cost possible. We also believe we have a corporate responsibility to provide our customers with other valuable services that may be unrelated to generating electricity.

For example, we want to help our customers make the right decisions about planting trees—where to plant, what to plant, how to plant—and anything else related to managing trees to create attractive landscapes in our communities. Distribution and Transmission Rights-of-Way (ROW) are commonplace in our communities and are the means by which we deliver energy to homes, schools, hospitals and other businesses. We hope this brochure helps with your tree planting decisions as they relate to Alabama Power ROW's.

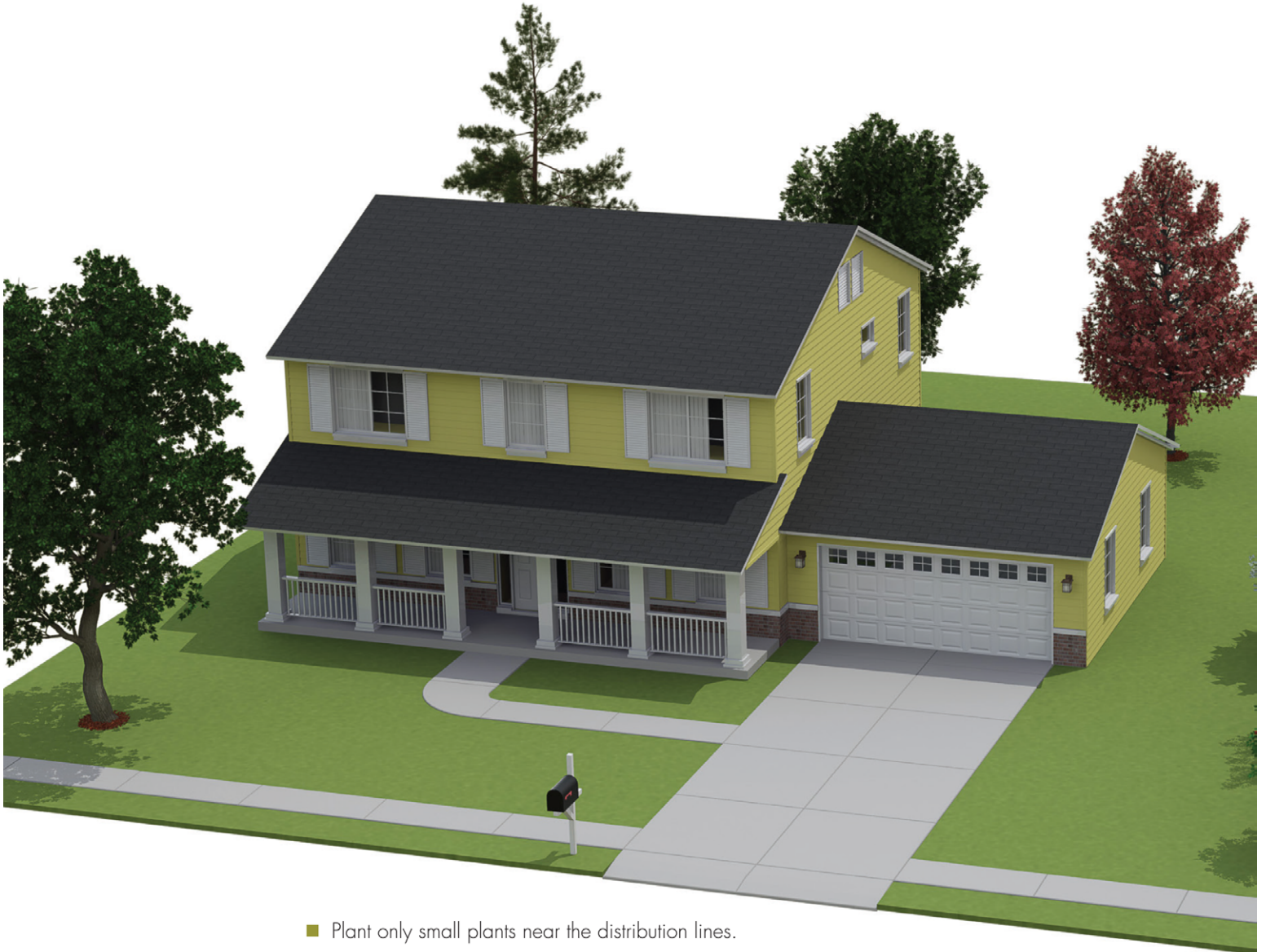


*If you would like more information, please call your local Alabama Power office or you may visit us at <http://alpwr.co/vm> or email us at [apcvm@southernco.com](mailto:apcvm@southernco.com).*





# Landscaping With Trees



- Plant only small plants near the distribution lines.
- Small trees that produce fruit or nuts attract birds and other wildlife.
- Small trees can be planted create hedges for privacy or to screen undesirable views.
- Small flowering trees add interest and beauty to the landscapes. Many species attract butterflies and hummingbirds.

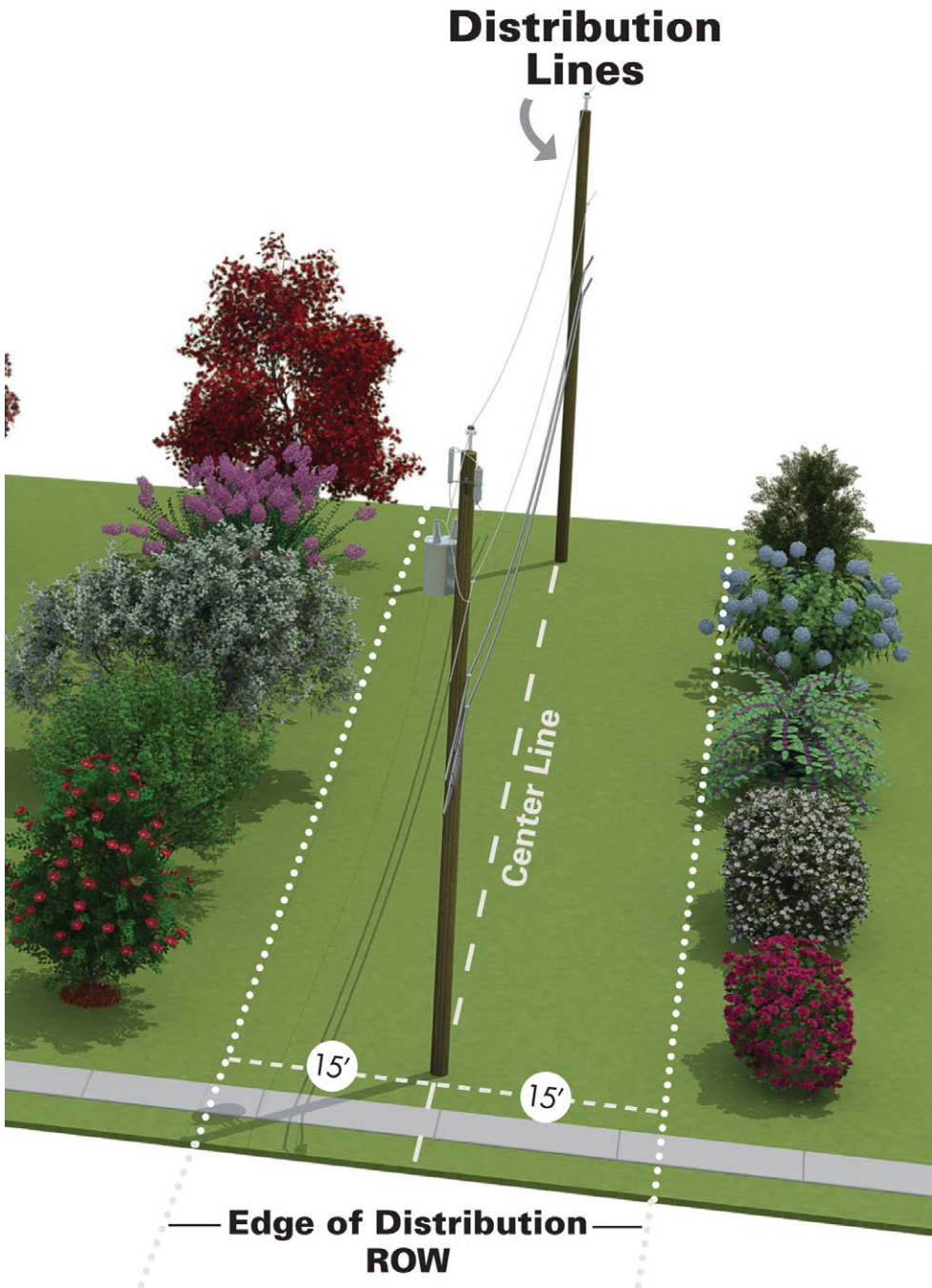


# Plant the Right Tree in the Right Place

## Recommended Planting

### Small, Medium, Tall Zone

Common Name	Scientific Name
Azalea	<i>Rhododendron spp.</i>
Beautyberry	<i>Callicarpa americana</i>
Boxwood, Common	<i>Buxus sempervirens</i>
Forsythia	<i>Forsythia spp.</i>
Gardenia	<i>Gardenia jasminoides</i>
Holly, Chinese	<i>Ilex cornuta</i>
Hydrangea	<i>Hydrangea spp.</i>
Indian Hawthorn	<i>Raphiolepis indica</i>
Knockout Rose	<i>Rosa 'Radrazz'</i>
Nandina	<i>Nandina domestica</i>
Olive, Tea	<i>Osmanthus fortunea spp.</i>



### Medium, Tall Zone

Common Name	Scientific Name
Apricot, Japanese	<i>Prunus mume</i>
Bottlebrush Buckeye	<i>Aesulus parviflora</i>
Camellia	<i>Buxus sempervirens</i>
Crape Myrtle	<i>Camellia spp.</i>
Crabapple	<i>Lagerstroemia spp.</i>
Fringe Tree	<i>Chionanthus virginicus</i>
Dogwood	<i>Cornus spp.</i>
Firethorn, Formosa	<i>Pyracantha koidsumii</i>
Holly, Burford	<i>Ilex cornuta "Burford"</i>
Holly, Nellie R. Stevens	<i>Ilex x "Nellie R. Stevens"</i>
Holly, Yaupon	<i>Ilex vomitoria</i>
Maple, Japanese	<i>Acer palmatum</i>
Olive, Fragrant	<i>Osmanthus fragrans</i>
Pomegranate	<i>Punica spp.</i>
Seviceberry	<i>Amelanchier spp.</i>
Viburnum	<i>Viburnum spp.</i>
Waxmyrtle	<i>Myrica spp.</i>
Weeping Yaupon	<i>ilex vomitoria 'Pendula'</i>
Winged Euonymus	<i>Euonymus alatus</i>
Witchhazel	<i>Hamamelis spp.</i>

## Knockout Rose

*Rosa 'Radrazz'*



Mature Ht: 3-4'  
Mature Sd: 3-4'

Flowers vary, mostly red or pink. Very showy color. Tough plant.

## Gardenia

*Gardenia jasminoides*



Mature Ht: 4-8'  
Mature Sd: 4-8'

Flowers vary, mostly white. Used as screen or hedge. Dark leaves provide contrast.

## Beautyberry

*Callicarpa americana*



Mature Ht: 3-8'  
Mature Sd: 4-8'

A hardy native species with showy berries. Desired for aesthetics and wildlife.

## Tea Olive

*Osmanthus heterophyllus*



Mature Ht: 8-15'  
Mature Sd: 10-18'

Used in hedges, border or buffer plants. Flowers are not particularly showy, but very fragrant.

## Waxmyrtle

*Myrica cerifera*



Mature Ht: 15-25'  
Mature Sd: 20-25'

Native and easily grown tree. Leaves are fragrant. Once established it is low maintenance.

## Crape Myrtle

*Lagerstroemia spp.*



Mature Ht: 10-40'  
Mature Sd: 15-20'

Popular tree planted for its showy summer flowers and fall leaves. Able to withstand repeated topplings.

## Plant taller trees away from overhead utility lines

### Tall Zone:

Careful consideration should be given to trees planted adjacent to distribution line rights of way. Remember, when you plant a tree it may appear a long way from the power lines; but as it grows to maturity the crown of the tree will likely spread 20-30 feet in every direction from where the hole is dug. This is similar to planting an oak tree 10 feet from your home's foundation.

### Medium Zone:

This zone is generally further than 15 feet away from the center of the distribution line. Low growing ornamental trees that do not exceed a mature height of 20 feet can be considered in this zone.

**Remember that no plant should be placed within 15 feet of poles or structures.** Also, consideration should be made as to how the plant could impact structures in the future, i.e., vines around guy wire anchors.

### Small Zone: (Wire Zone)

Plants in this zone are less than 10 feet in height. Remember plants directly under power lines should be minimized to provide safe access for utility workers (and to avoid damage to landscaping when maintenance or repairs are needed).

## Camellia

*Camellia japonica*



Mature Ht: 7-12'  
Mature Sd: 5-10'

Flower colors vary, can be 2-5" across. Planted as screen, border, specimen or container.

## Hydrangea

*Hydrangea spp.*



Mature Ht: 6-10'  
Mature Sd: 6-10'

Popular for its showy flowers. Multiple varieties of color for your choice.

## Tall Zone

Common Name  
Baldcypress  
Blackgum  
Red maple  
Southern Magnolia  
Sweetgum

Chestnut Oak  
Live Oak  
Nuttall Oak  
Pin Oak  
Post Oak  
Shumard Oak  
White Oak  
Willow Oak

Scientific Name  
*Taxodium distichum*  
*Nyssa sylvatica*  
*Acer rubrum*  
*Magnolia spp.*  
*Liquidambar styraciflua*  
*Quercus prinus*  
*Quercus virginiana*  
*Quercus nuttallii*  
*Quercus palustris*  
*Quercus stellata*  
*Quercus shumardii*  
*Quercus alba*  
*Quercus phellos*

## Maple, Japanese

*Acer palmatum*



Mature Ht: 15-25'  
Mature Sd: 15-25'

Usually found as a specimen tree. Known for its showy fall color and varying leaf texture. Bark is prone to sun scald.

## Kousa Dogwood

*Cornus kousa*



Mature Ht: 15-25'  
Mature Sd: 15-25'

Resistant to anthracnose, but still prefers shade. Exfoliating bark w/ showy flowers that persist longer than *C. florida*.



Customers are asked to call Alabama 811, by dialing 811 from your phone, before digging in an area with underground utilities. Within 2 business days of notice a utility representative will locate and mark any buried lines.

**This is a FREE service**

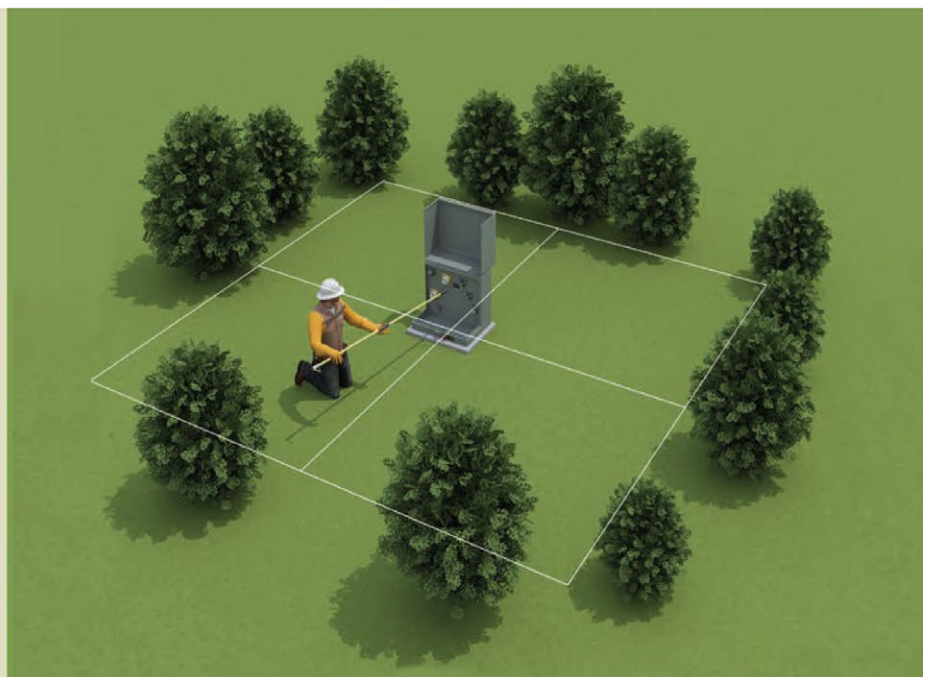
**For more information visit:  
[www.al811.com](http://www.al811.com)**

## Transformers For Underground Utilities

We need room to work safely around our underground transformers.

**Please keep vegetation and other structures 10 feet away from all sides.**

Obstructions may be damaged or removed during service restoration or maintenance. This is a good reminder to consider the mature spread of desired plants when planning your landscape.

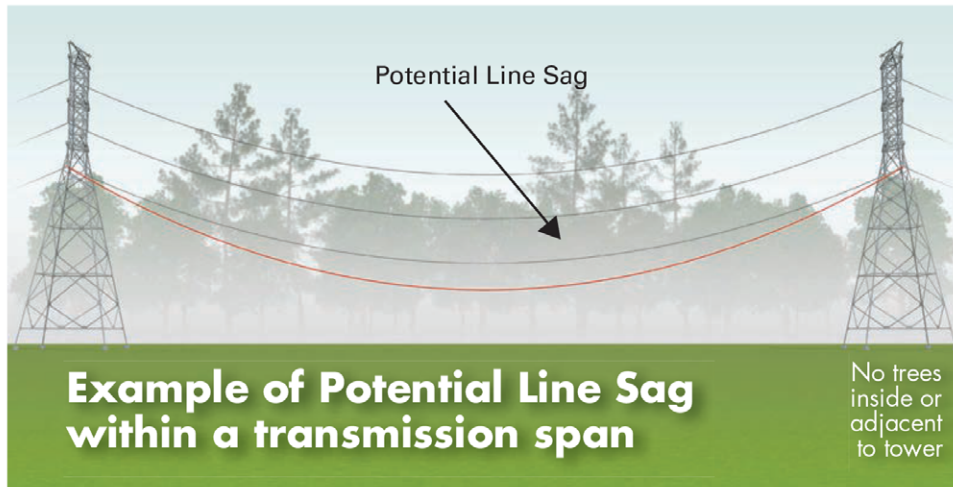


## Types of Utility Lines



### What types of utility lines are near you?

Planting restrictions for trees and other vegetation vary widely for different types of utility lines - electric transmission line and electric distribution lines



**Alabama Power Company recommends that you consult your local library, local tree nursery or extension service for more detailed information regarding plants for the ROW.**

Remember, when planting anything, be mindful what is the growth pattern and how it will affect our equipment.

For more information, contact the organizations below.

**Alabama One Call**  
811 or 1-800-292-8525

**Alabama Power Vegetation Management Group**  
Monday - Friday | 8am-5pm | 205-257-2155  
or Customer Service 1-800-245-2244  
Email: [apcvm@southernco.com](mailto:apcvm@southernco.com)



[www.alabamapower.com](http://www.alabamapower.com) | [apcvm@southernco.com](mailto:apcvm@southernco.com)