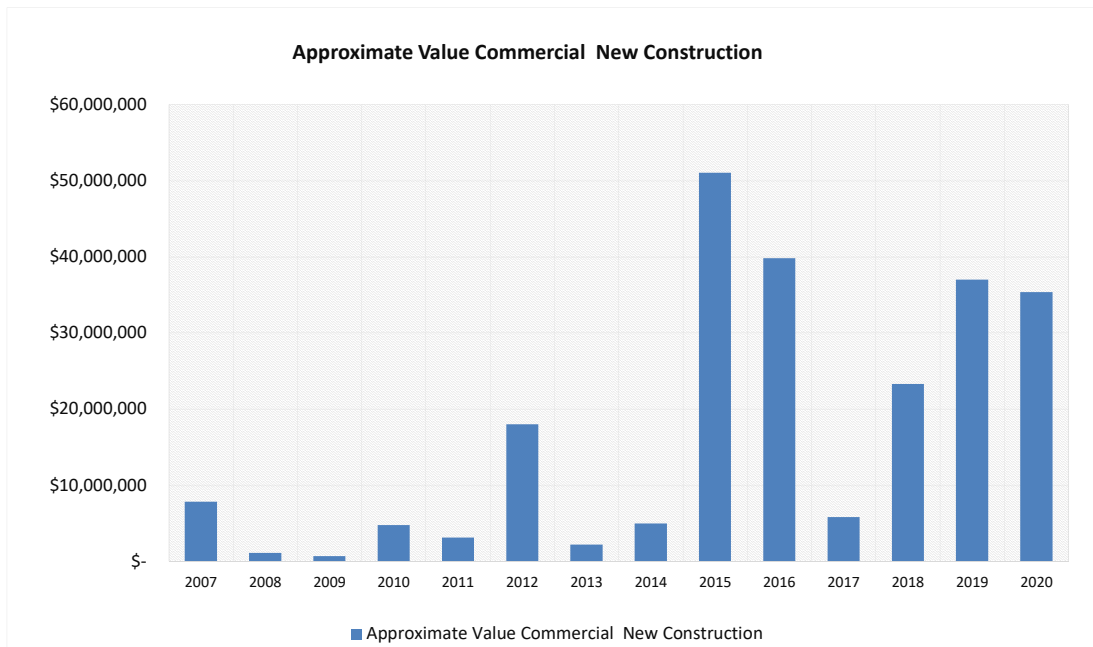
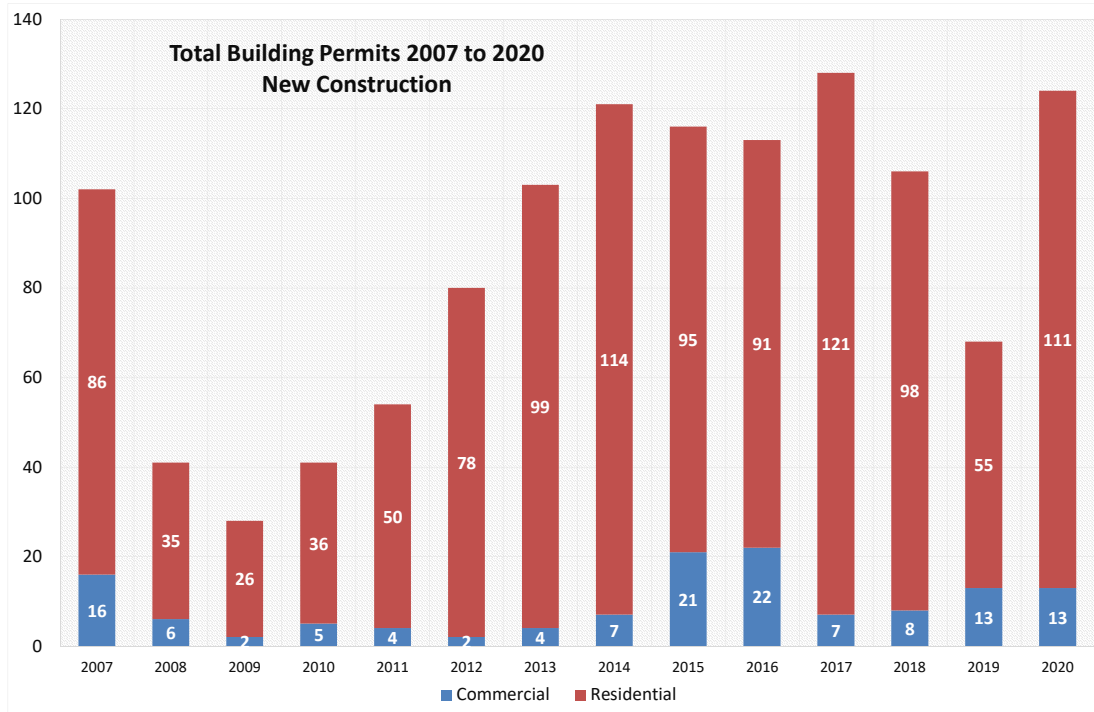


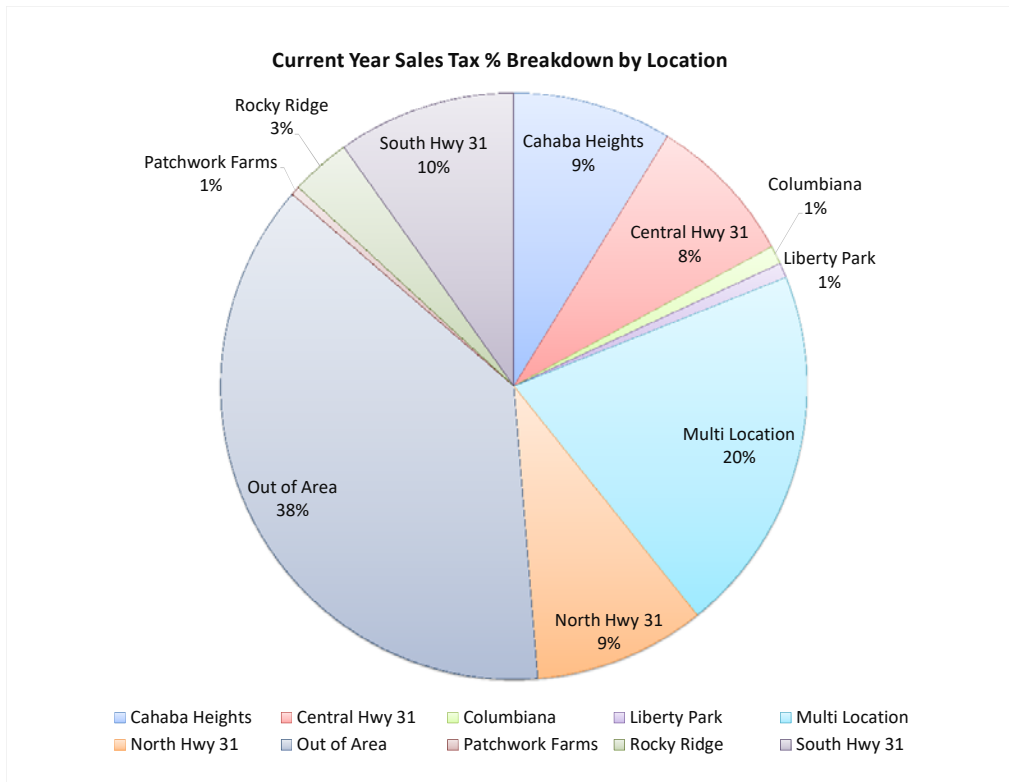
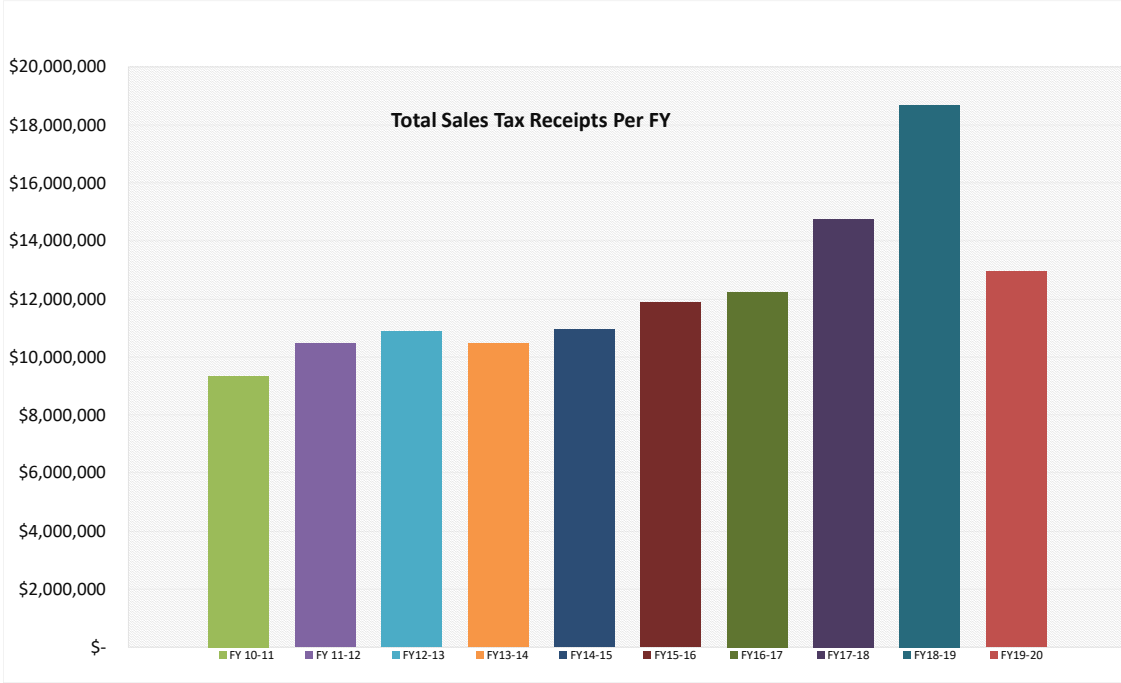


City of Vestavia Hills Monthly Growth Dashboard
Sales Tax & Building Permits
 as of May 31, 2020





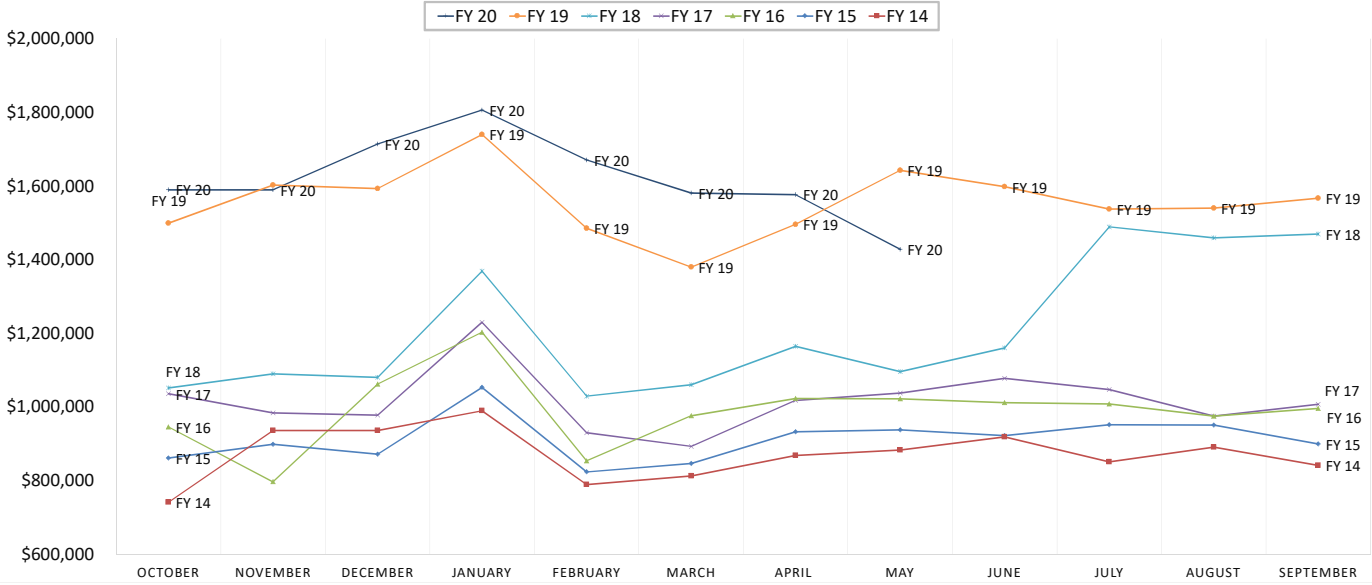
City of Vestavia Hills Monthly Growth Dashboard
Sales Tax & Building Permits
 as of May 31, 2020



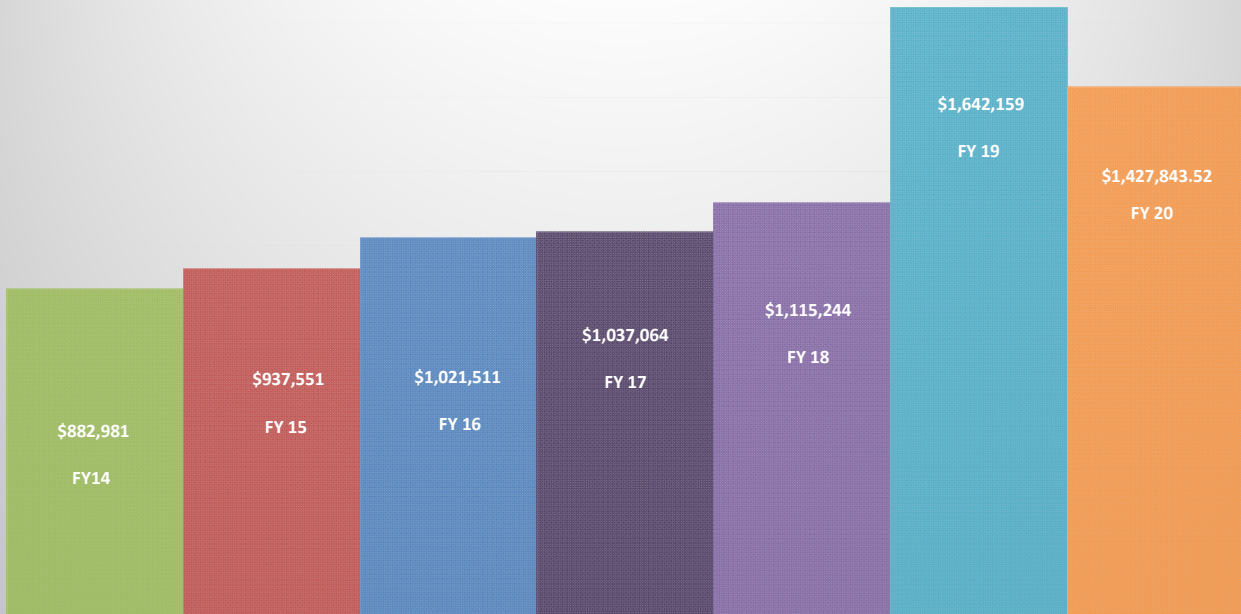


City of Vestavia Hills Monthly Growth Dashboard
Sales Tax & Building Permits
 as of May 31, 2020

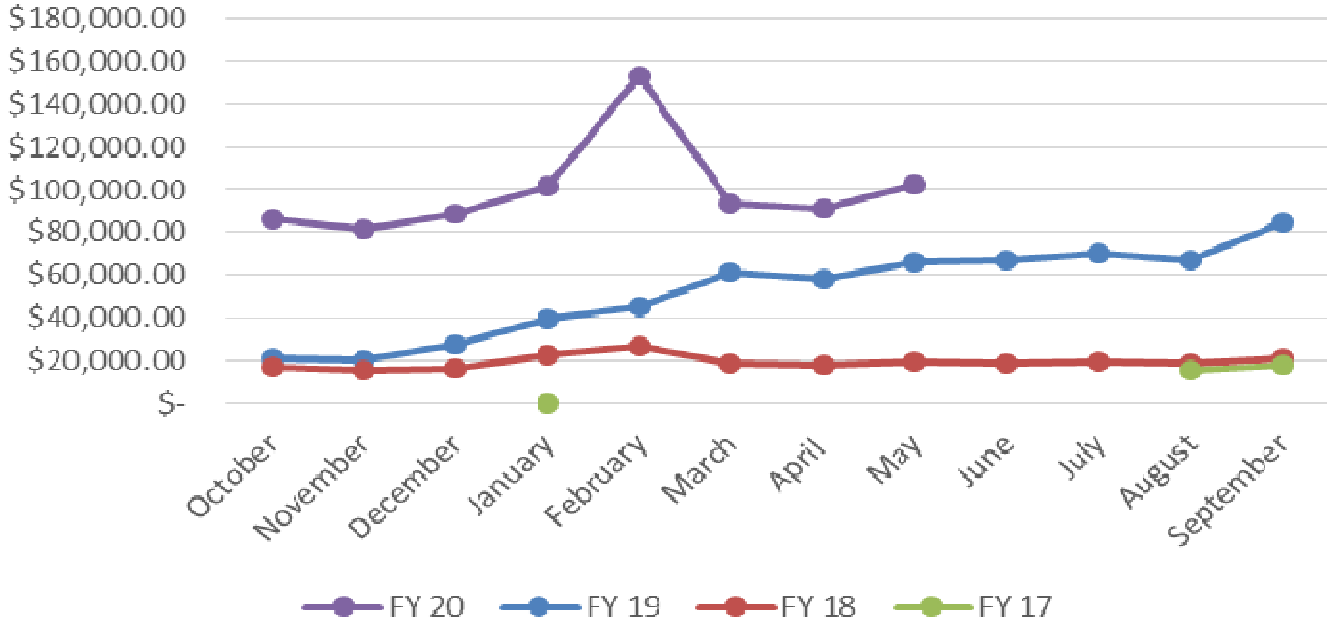
TOTAL MONTHLY SALES TAX RECEIPTS



Sales Taxes Collected in May



SSUT Monthly Receipts





City of Vestavia Hills Monthly Growth Dashboard

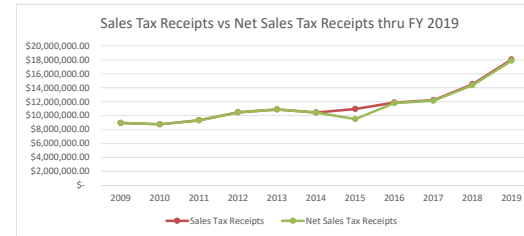
Sales Tax Building Permits as of May 31, 2020

Building Permits by Fiscal Year

Fiscal Year	Commercial Permits New	Residential Permits New	Total	Approximate Value Commercial New Construction
2007	16	86	102	\$ 7,817,880.00
2008	6	35	41	\$ 1,077,814.44
2009	2	26	28	\$ 648,730.00
2010	5	36	41	\$ 4,728,444.44
2011	4	50	54	\$ 3,094,222.22
2012	2	78	80	\$ 18,005,555.56
2013	4	99	103	\$ 2,174,855.56
2014	7	114	121	\$ 4,936,671.11
2015	21	95	116	\$ 51,031,000.00
2016	22	91	113	\$ 39,792,455.00
2017	7	121	128	\$ 5,775,931.00
2018	8	106	114	\$ 23,287,414.00
2019	13	55	68	\$ 36,983,065.00
2020	15	111	124	\$ 35,336,903.00

Net Sales Tax Per Fiscal Year

Fiscal Year	Sales Tax Receipts	Economic Incentives Paid In Fiscal Year	Net Sales Tax Receipts	% Change in Net Sales Tax Receipts
2009	\$ 8,947,596.94	\$ -	\$ 8,947,596.94	
2010	\$ 8,762,399.88	\$ -	\$ 8,762,399.88	-2.07%
2011	\$ 9,332,990.69	\$ -	\$ 9,332,990.69	6.51%
2012	\$ 10,466,758.27	\$ -	\$ 10,466,758.27	12.15%
2013	\$ 10,885,112.65	\$ -	\$ 10,885,112.65	4.00%
2014	\$ 10,452,546.50	\$ -	\$ 10,452,546.50	-3.97%
2015	\$ 10,945,432.82	\$ 1,447,586.26	\$ 9,497,846.56	-9.13%
2016	\$ 11,867,559.58	\$ 59,153.38	\$ 11,808,406.20	24.33%
2017	\$ 12,208,891.75	\$ 73,422.00	\$ 12,135,469.75	2.77%
2018	\$ 14,515,097.15	\$ 156,254.00	\$ 14,358,843.15	18.32%
2019	\$ 18,050,831.14	\$ 171,727.76	\$ 17,879,103.38	24.52%
2020				

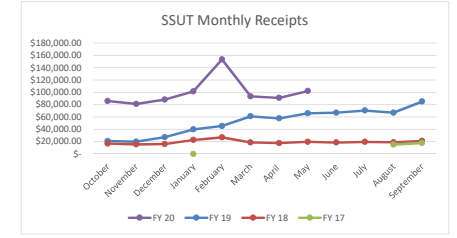


Sales Taxes Received by Location- Annual Trend

Full Fiscal Year	FY 10-11	FY 11-12	% Change from prior year	FY12-13	% Change from prior year	FY13-14	% Change from prior year	FY14-15	% Change from prior year	FY15-16	% Change from prior year	FY16-17	% Change from prior year	FY17-18	% Change from prior year	FY18-19	% Change from prior year	FY19-20
Cahaba Heights	\$ 796,344	\$ 944,002	18.5%	\$ 1,069,110	13.3%	\$ 1,082,149.55	1%	\$ 1,167,675.99	7.90%	\$ 1,247,829.58	6.86%	\$ 1,173,754.56	-5.9%	\$ 1,175,870.80	0.2%	\$ 1,628,272.63	38.5%	\$ 1,067,042.82
Central Hwy 31 (Old Creek)	\$ 490,408	\$ 536,333	9.4%	\$ 477,706	-10.9%	\$ 431,395.86	-10%	\$ 343,018.42	-20.49%	\$ 1,104,285.20	221.93%	\$ 1,187,136.19	7.5%	\$ 1,320,324.93	11.2%	\$ 1,467,874.02	11.2%	\$ 1,013,687.20
Columbiana	\$ 102,329	\$ 123,504	20.7%	\$ 127,274	3.1%	\$ 108,977.25	-14%	\$ 93,070.58	-14.60%	\$ 84,176.67	-9.56%	\$ 82,288.45	-2.2%	\$ 109,914.40	33.6%	\$ 183,508.86	67.0%	\$ 124,007.10
Liberty Park	\$ 97,782	\$ 111,170	13.7%	\$ 110,961	-0.2%	\$ 125,466.65	13%	\$ 105,405.93	-15.99%	\$ 111,283.93	5.58%	\$ 123,236.94	10.7%	\$ 160,313.74	20.2%	\$ 99,040.86	-38.1%	\$ 124,007.10
Multi Location	\$ 745,663	\$ 826,240	10.8%	\$ 821,583	-0.6%	\$ 834,962.33	2%	\$ 844,019.95	1.08%	\$ 897,999.76	6.40%	\$ 1,898,836.86	111.5%	\$ 2,602,648.29	37.1%	\$ 3,487,213.42	34.0%	\$ 2,467,982.93
North Hwy 31 (Shades Cress)	\$ 2,176,944	\$ 2,426,979	11.5%	\$ 2,430,864	0.2%	\$ 2,370,092.49	-3%	\$ 2,458,134.76	3.71%	\$ 2,501,443.50	1.76%	\$ 1,740,045.38	-30.4%	\$ 1,430,268.40	-17.5%	\$ 1,838,824.55	28.0%	\$ 1,148,692.22
Out of Area	\$ 2,193,180	\$ 2,454,087	11.9%	\$ 2,710,071	10.4%	\$ 2,529,510.10	-7%	\$ 2,944,708.94	16.41%	\$ 3,461,402.02	17.55%	\$ 3,614,291.36	4.4%	\$ 5,206,587.65	44.1%	\$ 6,367,867.94	22.3%	\$ 4,579,005.88
Patchwork Farms	\$ -	\$ -		\$ -		\$ -		\$ -		\$ -		\$ 8,165.52		\$ 84,554.77	935.5%	\$ 135,104.17	59.8%	\$ 60,895.58
Rocky Ridge	\$ 663,942	\$ 732,395	10.3%	\$ 734,473	0.3%	\$ 748,460.87	2%	\$ 743,254.05	-0.70%	\$ 747,769.14	0.61%	\$ 792,094.40	5.9%	\$ 853,117.77	7.7%	\$ 800,267.11	-0.8%	\$ 401,392.21
South Hwy 31 (Massey Rd)	\$ 2,066,398	\$ 2,312,048	11.9%	\$ 2,403,070	3.9%	\$ 2,221,531.40	-8%	\$ 2,246,144.20	1.11%	\$ 1,711,369.78	-23.81%	\$ 1,589,044.09	-7.1%	\$ 1,592,213.55	0.2%	\$ 1,921,584.70	20.7%	\$ 1,196,141.37
Grand Total	\$ 9,332,991	\$ 10,466,758	12.1%	\$ 10,885,113	4.0%	\$ 10,452,546.50	-4.0%	\$ 10,945,432.82	4.7%	\$ 11,867,559.58	8.4%	\$ 12,208,891.75	2.9%	\$ 14,515,097.15	18.9%	\$ 18,050,831.14	24.4%	\$ 12,157,888.17

Sales Taxes Received by Location- Monthly Trend

Sales Taxes by District	FY 20	October	November	December	January	February	March	April	May	June	July	August	September	FY 19 TOTAL YTD	% Change from prior year YTD
Cahaba Heights	\$ 131,850.77	\$ 103,533.86	\$ 192,125.20	\$ 159,080.29	\$ 118,471.33	\$ 116,478.23	\$ 129,326.00	\$ 116,177.14						\$ 1,067,042.82	-2.87%
Central Hwy 31	\$ 115,602.98	\$ 116,396.75	\$ 144,252.88	\$ 136,819.21	\$ 136,706.45	\$ 125,865.97	\$ 136,144.31	\$ 101,898.65						\$ 1,013,687.20	0.12%
Columbiana	\$ 16,131.79	\$ 17,794.41	\$ 15,015.49	\$ 20,040.96	\$ 15,114.11	\$ 11,755.47	\$ 13,128.49	\$ 15,026.38						\$ 124,007.10	9.50%
Liberty Park	\$ 13,127.82	\$ 11,644.92	\$ 11,799.49	\$ 10,163.81	\$ 6,070.19	\$ 11,734.85	\$ 17,729.02	\$ 16,770.76						\$ 99,040.86	-10.58%
Multi Location	\$ 280,673.40	\$ 310,474.07	\$ 291,009.92	\$ 262,533.82	\$ 305,156.72	\$ 328,691.80	\$ 372,223.92	\$ 317,219.28						\$ 2,467,982.93	5.94%
North Hwy 31	\$ 148,827.38	\$ 149,314.67	\$ 162,717.74	\$ 182,948.69	\$ 147,276.66	\$ 150,942.94	\$ 119,310.57	\$ 87,353.57						\$ 1,148,692.22	-8.08%
Out of Area	\$ 583,670.03	\$ 573,370.14	\$ 575,198.53	\$ 671,265.78	\$ 589,516.49	\$ 609,368.01	\$ 510,102.13	\$ 466,514.77						\$ 4,579,005.88	8.86%
Patchwork Farms	\$ 9,956.41	\$ 7,012.43	\$ 8,398.35	\$ 8,475.10	\$ 9,067.11	\$ 7,575.06	\$ 5,017.55	\$ 5,393.57						\$ 60,895.58	-26.87%
Rocky Ridge	\$ 52,178.55	\$ 62,114.02	\$ 57,498.83	\$ 47,506.12	\$ 44,991.00	\$ 36,916.72	\$ 47,732.59	\$ 52,454.38						\$ 401,392.21	-36.57%
South Hwy 31	\$ 151,837.39	\$ 156,257.36	\$ 167,332.59	\$ 205,635.88	\$ 144,808.12	\$ 88,310.30	\$ 135,119.68	\$ 146,840.05						\$ 1,196,141.37	-5.17%
Grand Total	\$ 1,503,856.52	\$ 1,507,912.63	\$ 1,625,349.02	\$ 1,704,469.66	\$ 1,517,178.18	\$ 1,487,639.35	\$ 1,485,834.26	\$ 1,325,648.55						\$ 12,157,888.17	0.49%
SSUT	\$ 85,900.60	\$ 81,213.77	\$ 88,324.40	\$ 101,537.40	\$ 153,415.51	\$ 93,434.45	\$ 90,977.07	\$ 102,194.97						\$ 796,398.17	135.50%
Adjusted Total	\$ 1,589,757.12	\$ 1,589,126.40	\$ 1,713,673.42	\$ 1,806,007.06	\$ 1,670,593.69	\$ 1,581,073.80	\$ 1,576,811.33	\$ 1,427,843.52						\$ 12,954,886.34	4.17%



Sales Taxes by District	FY 19	October	November	December	January	February	March	April	May	June	July	August	September	FY 19 TOTAL YTD	% Change from prior year YTD
Cahaba Heights	\$ 116,270.12	\$ 151,264.58	\$ 141,200.70	\$ 167,257.57	\$ 116,910.20	\$ 129,419.22	\$ 134,111.00	\$ 142,190.91	\$ 146,424.65	\$ 125,780.85	\$ 126,851.54	\$ 130,591.29	\$ 1,628,272.63	38%	
Central Hwy 31	\$ 133,631.50	\$ 164,650.47	\$ 127,947.47	\$ 136,819.21	\$ 136,706.45	\$ 125,865.97	\$ 136,144.31	\$ 110,898.65						\$ 1,013,687.20	11%
Columbiana	\$ 13,536.38	\$ 13,200.52	\$ 13,664.12	\$ 17,144.18	\$ 9,024.38	\$ 16,277.94	\$ 15,212.72	\$ 15,190.45	\$ 19,362.91	\$ 20,297.77	\$ 14,810.39	\$ 15,787.10	\$ 183,508.86	67%	
Liberty Park	\$ 14,813.89	\$ 8,425.53	\$ 12,085.53	\$ 24,170.19	\$ 14,953.03	\$ 18,688.21	\$ 14,003.64	\$ 12,438.89	\$ 14,437.27	\$ 14,003.64	\$ 14,437.27	\$ 12,732.09	\$ 9,951.21	\$ 160,313.74	20%
Multi Location	\$ 267,630.71	\$ 298,908.23	\$ 258,241.08	\$ 289,321.60	\$ 311,046.30	\$ 276,566.40	\$ 282,901.93	\$ 344,894.30	\$ 287,081.82	\$ 275,403.26	\$ 311,194.38	\$ 284,023.41	\$ 3,487,213.42	34%	
North Hwy 31	\$ 146,417.54	\$ 143,941.70	\$ 162,649.86	\$ 162,003.70	\$ 124,003.70	\$ 142,674.82	\$ 157,496.94	\$ 171,563.34	\$ 159,348.63	\$ 147,353.62	\$ 138,623.60	\$ 143,805.15	\$ 1,838,824.55	28%	
Out of Area	\$ 550,570.57	\$ 564,113.83	\$ 590,788.76	\$ 556,877.44	\$ 520,329.03	\$ 426,463.10	\$ 481,099.90	\$ 516,004.58	\$ 544,708.47	\$ 533,978.82	\$ 533,931.75	\$ 549,001.69	\$ 6,367,867.94	22%	
Patchwork Farms	\$ 10,872.50	\$ 8,758.48	\$ 9,172.20	\$ 10,210.00	\$ 8,706.78	\$ 10,723.63	\$ 12,108.60	\$ 11,506.48	\$ 13,278.03	\$ 15,990.46	\$ 11,060.09	\$ 11,060.09	\$ 135,104.17	60%	
Rocky Ridge	\$ 88,094.63	\$ 78,531.99	\$ 95,096.60	\$ 101,201.03	\$ 78,510.09	\$ 39,022.01	\$ 61,521.82	\$ 71,049.09	\$ 63,407.81	\$ 60,515.99	\$ 49,729.23	\$ 53,723.82	\$ 800,267.11	1%	
South Hwy 31	\$ 135,711.35	\$ 150,502.52	\$ 155,090.61	\$ 196,950.20	\$ 140,311.62	\$ 135,279.46	\$ 168,730.99	\$ 178,835.94	\$ 168,303.68	\$ 167,344.30	\$ 158,446.01	\$ 166,078.02	\$ 1,921,584.70	21%	
Grand Total	\$ 1,477,549.19	\$ 1,582,097.85	\$ 1,565,937.15	\$ 1,699,844.96	\$ 1,439,829.43	\$ 1,318,449.77	\$ 1,438,133.68	\$ 1,576,209.08	\$ 1,530,955.78	\$ 1,466,725.85	\$ 1,473,091.86	\$ 1,482,006.54	\$ 18,050,831.14	24%	
SSUT	\$ 21,065.23	\$ 19,982.57	\$ 21,168.93	\$ 39,869.42	\$ 45,457.63	\$ 61,175.09	\$ 57,762.47	\$ 65,950.01	\$ 66,976.82	\$ 70,453.26	\$ 66,965.50	\$ 85,031.26	\$ 627,858.19	171%	
Adjusted Total	\$ 1,498,614.42	\$ 1,602,080.42	\$ 1,593,106.08	\$ 1,739,714.38	\$ 1,485,287.06	\$ 1,379,624.86	\$ 1,495,896.15	\$ 1,642,159.09	\$ 1,597,932.60	\$ 1,537,179.11	\$ 1,540,057.36	\$ 1,567,037.80	\$ 18,678,689.33	27%	

Sales Taxes by District		FY 18												FY 18 TOTAL	% Change from prior year
		October	November	December	January	February	March	April	May	June	July	August	September	YTD	YTD
Cabaha Heights	\$	87,497.96	85,087.79	91,702.86	131,409.44	80,869.81	85,700.03	92,415.28	89,303.68	93,154.68	109,831.18	114,550.24	114,287.85	1,175,870.80	0%
Central Hwy 31	\$	106,252.10	94,731.39	91,255.54	99,877.70	99,877.70	96,052.67	111,786.54	102,725.08	95,643.41	142,725.67	127,562.05	135,886.93	1,320,324.93	11%
Columbiana	\$	9,144.34	9,180.01	5,779.53	12,549.39	5,940.66	7,544.67	6,704.26	8,845.78	10,235.71	11,950.69	11,641.63	10,397.73	109,914.40	34%
Liberty Park	\$	9,751.06	15,724.82	9,638.65	12,641.78	9,497.10	5,447.10	11,827.68	9,322.97	6,023.23	5,566.29	9,942.58	11,035.07	133,396.59	8%
Multi Location	\$	182,128.48	215,347.56	170,956.98	215,159.42	210,677.59	212,913.80	200,785.00	200,200.18	209,307.51	257,945.22	293,318.23	234,108.42	2,602,848.29	37%
North Hwy 31	\$	111,053.24	114,141.17	125,980.77	143,323.51	94,158.58	102,680.74	120,420.70	110,301.70	103,679.01	143,211.50	131,003.34	136,314.14	1,436,268.40	-17%
Out of Area	\$	353,736.94	360,935.85	376,807.68	496,203.40	354,226.16	370,923.33	405,986.13	368,728.03	440,816.77	550,974.81	535,710.31	591,538.24	5,206,587.65	44%
Patchwork Farms	\$	5,863.38	6,018.27	5,263.96	5,579.90	6,167.81	5,313.55	6,167.81	7,052.06	6,673.65	5,935.58	8,224.67	9,989.87	84,554.77	936%
Rocky Ridge	\$	65,105.68	66,628.62	71,466.73	76,735.97	56,463.82	55,175.06	70,560.49	78,076.14	68,798.88	92,214.40	75,757.19	76,134.79	853,117.77	8%
South Hwy 31	\$	120,502.02	122,108.31	131,057.43	158,857.44	109,716.16	113,451.64	136,706.29	124,650.44	126,665.82	151,898.41	146,864.30	149,735.29	1,592,213.55	0%
Grand Total	\$	1,051,035.20	1,089,903.79	1,079,970.13	1,368,286.10	1,029,071.61	1,060,106.85	1,164,369.72	1,095,527.91	1,159,803.66	1,488,791.91	1,458,801.94	1,469,428.33	14,515,097.15	19%
SSUT	\$	16,851.91	15,402.09	16,082.62	22,695.02	26,973.24	18,604.78	17,595.10	19,715.66	18,520.58	14,610.13	18,855.88	21,149.63	232,056.64	
Adjusted Total	\$	1,067,887.11	1,105,305.88	1,096,052.75	1,390,981.12	1,056,044.85	1,078,711.63	1,181,964.82	1,115,243.57	1,178,324.24	1,503,402.04	1,477,657.82	1,490,577.96	14,747,153.79	

Sales Taxes by District		FY 17												FY 17 TOTAL	% Change from prior year
		October	Nov. 2016	Dec. 2016	Jan. 2017	Feb. 2017	Mar. 2017	April. 2017	May. 2017	June. 2017	July. 2017	Aug. 2017	Sept. 2017	YTD	YTD
Cabaha Heights	\$	101,832.38	95,145.75	134,094.20	117,881.41	85,843.30	89,680.85	100,073.73	70,108.56	106,818.12	90,841.85	90,568.70	90,865.71	1,173,754.56	-5.9%
Central Hwy 31	\$	105,641.30	91,236.17	93,450.31	103,945.03	105,727.51	96,353.17	99,722.02	89,237.55	113,603.98	95,225.81	94,554.15	98,438.29	1,187,136.19	7.5%
Columbiana	\$	7,804.87	6,956.01	6,738.43	5,555.24	6,738.43	4,496.34	7,898.42	8,290.05	8,512.04	7,409.84	8,512.04	6,408.52	82,288.45	-2.2%
Liberty Park	\$	11,839.48	9,708.25	7,757.40	10,979.81	8,728.84	11,778.56	9,275.41	11,598.71	11,537.30	10,383.85	9,568.86	10,080.47	123,236.94	10.7%
Multi Location	\$	69,050.93	66,269.79	55,848.74	242,295.26	202,806.90	170,798.53	175,098.36	199,316.20	172,277.66	178,481.63	194,602.72	171,990.04	1,898,836.86	111.5%
North Hwy 31	\$	190,070.86	218,482.41	209,320.84	185,063.76	106,099.00	126,339.45	129,743.32	118,030.34	126,470.12	123,942.18	98,727.86	107,753.24	1,740,043.38	-30.4%
Out of Area	\$	357,417.91	293,521.06	279,155.57	301,471.21	254,293.73	263,236.64	289,935.83	292,474.37	328,774.57	347,286.90	287,820.58	318,893.99	3,614,291.36	4.4%
Patchwork Farms	\$	-	-	-	-	-	-	-	-	1,019.70	1,256.50	1,595.71	4,293.61	81,665.52	
Rocky Ridge	\$	63,636.02	70,595.45	64,834.00	74,072.24	53,072.31	55,500.22	65,572.20	77,585.00	76,580.05	62,970.59	60,006.36	67,660.96	792,094.40	5.9%
South Hwy 31	\$	127,994.24	131,121.46	127,761.90	187,430.23	109,253.62	72,216.28	141,272.55	170,814.62	131,913.91	128,375.71	122,612.05	138,277.52	1,589,044.09	-7.1%
Grand Total	\$	1,035,287.99	983,036.35	977,778.20	1,229,877.38	929,549.70	892,397.88	1,017,190.68	1,037,063.77	1,077,294.56	1,047,277.06	975,130.43	1,007,007.75	12,208,891.75	2.9%
SSUT	\$	15,191.66	15,402.09	16,082.62	22,695.02	26,973.24	18,604.78	17,595.10	19,715.66	18,520.58	14,610.13	18,855.88	21,149.63	330,553.70	
Adjusted Total	\$	1,050,479.65	998,438.44	993,860.82	1,252,572.40	956,522.94	911,002.66	1,034,785.78	1,056,779.43	1,096,810.12	1,061,887.19	993,740.56	1,028,157.38	12,539,445.45	

Sales Taxes by District		FY 16												FY 16 TOTAL	% Change from prior year
		Oct. 2015	Nov. 2015	Dec. 2015	Jan. 2016	Feb. 2016	Mar. 2016	April. 2016	May. 2016	June. 2016	July. 2016	Aug. 2016	Sept. 2016	YTD	YTD
Cabaha Heights	\$	100,150.91	72,256.26	131,897.84	159,758.16	84,437.16	97,810.14	107,499.20	98,794.16	104,585.67	96,249.19	95,838.90	98,551.99	1,247,829.58	7%
Central Hwy 31	\$	79,031.33	84,435.82	79,514.00	92,718.14	83,685.38	85,040.47	82,220.61	110,545.59	104,733.16	97,911.87	108,332.74	96,116.09	1,104,285.20	222%
Columbiana	\$	8,692.40	7,713.65	7,828.55	6,021.67	7,133.65	6,021.67	6,187.59	5,726.84	6,613.82	7,879.59	5,783.42	6,834.73	84,176.67	-10%
Liberty Park	\$	9,344.40	10,437.72	7,030.05	7,683.43	10,276.56	11,795.97	10,885.32	8,546.13	9,517.82	6,302.71	8,416.52	11,047.30	111,283.93	6%
Multi Location	\$	91,632.45	59,216.79	77,950.23	81,231.88	72,496.92	81,231.88	72,496.92	66,250.29	78,009.49	87,759.92	69,916.84	70,027.88	897,999.76	6%
North Hwy 31	\$	193,114.24	107,293.72	304,669.94	251,430.23	199,075.18	184,280.33	212,243.46	245,483.24	232,440.17	187,376.86	193,218.96	190,817.17	2,501,443.50	2%
Out of Area	\$	267,755.99	209,363.54	257,093.13	332,091.21	262,013.62	301,484.17	302,604.46	278,716.65	268,543.24	311,492.31	291,484.70	318,723.00	3,461,402.02	18%
Patchwork Farms	\$	-	-	-	-	-	-	-	-	-	-	-	-	-	
Rocky Ridge	\$	57,647.61	63,803.38	54,904.65	61,370.84	54,467.82	46,863.73	76,477.83	70,232.12	70,972.36	67,133.38	64,391.69	59,503.73	747,769.14	1%
South Hwy 31	\$	137,561.52	120,853.41	140,994.70	208,417.37	84,569.91	169,464.19	146,526.44	137,216.12	136,021.44	145,993.06	140,009.99	143,741.63	1,711,369.78	-24%
Grand Total	\$	944,930.85	796,229.37	1,061,768.19	1,202,529.81	853,090.53	975,393.28	1,022,813.07	1,021,511.14	1,011,437.17	1,008,098.89	974,393.76	995,363.52	11,867,559.58	8.42%

Sales Taxes by District		FY 15												FY 15 TOTAL	% Change from prior year
		Oct. 2014	Nov. 2014	Dec. 2014	Jan. 2015	Feb. 2015	Mar. 2015	April. 2015	May. 2015	June. 2015	July. 2015	Aug. 2015	Sept. 2015	YTD	YTD
Cabaha Heights	\$	87,033.74	111,960.11	89,404.76	117,709.93	87,175.80	84,056.37	99,620.63	95,396.75	102,765.01	92,882.59	100,611.41	99,058.89	1,167,675.99	
Central Hwy 31	\$	27,172.91	30,579.75	25,692.94	33,458.09	31,696.71	28,896.36	30,203.51	27,500.10	28,078.70	25,975.71	27,339.54	26,424.10	343,018.42	
Columbiana	\$	9,108.72	9,034.08	4,281.35	10,248.68	5,814.11	6,462.48	7,122.14	7,122.14	8,443.43	9,793.19	7,431.20	8,720.01	93,070.58	
Liberty Park	\$	10,361.60	10,029.42	7,479.35	10,486.62	8,130.35	11,467.16	7,978.43	6,684.65	10,544.63	7,052.41	7,955.91	7,235.40	105,405.93	
Multi Location	\$	75,096.17	65,927.03	62,414.25	78,941.95	56,560.99	66,515.65	70,570.52	73,932.29	60,161.42	95,494.52	74,886.15	63,519.01	844,019.95	
North Hwy 31	\$	187,301.08	199,380.02	216,894.68	245,639.21	206,406.83	185,659.44	200,930.66	220,532.51	206,235.77	194,801.45	206,078.65	189,174.46	2,458,134.76	
Out of Area	\$	229,761.88	227,885.26	197,787.34	250,122.86	205,010.12	242,321.80	264,928.11	249,371.83	249,860.66	277,012.39	279,109.85	271,536.84	2,944,708.94	
Patchwork Farms	\$	-	-	-	-	-	-	-	-	-	-	-	-	-	
Rocky Ridge	\$	60,153.36	61,074.34	65,300.89	67,448.02	55,871.50	52,997.84	65,741.23	67,276.64	73,652.24	59,967.84	53,047.88	60,722.27	743,254.05	
South Hwy 31	\$	175,093.08	182,459.53	202,277.16	238,648.32	166,447.66	167,520.47	186,246.76	189,734.45	182,022.38	188,608.09	194,113.81	172,972.09	2,246,144.20	
Grand Total	\$	861,082.54	898,329.94	871,532.72	1,052,703.68	823,114.07	845,897.57	931,931.04	937,551.36	921,764.24	951,588.19	950,574.40	899,363.07	10,945,432.82	

Sales Taxes by District		FY 14												FY 14 TOTAL	% Change from prior year